

# VILLAGE OF HEBRON

Comprehensive Plan

Meeting #1

October 18, 2022

5:30pm

# MEETING AGENDA

1. Welcome & Introductions
2. Role of the Committee
3. Tentative Meeting Schedule & Topics
4. Purpose & Use of the Comprehensive Plan
5. Comprehensive Creation and Adoption Plan Process
6. Project Website
7. Existing Conditions Overview
8. Committee Input Session
9. Issues & Opportunities
  - I. Big Ideas
  - II. Next Steps
  - III. Adjourn

# WELCOME AND INTRODUCTIONS

**Village Council**

**Village Staff**

**Committee Members**

**Neighborhood Strategies**

# ROLE OF CITIZEN ADIVSORY COMMITTEE

1. Will review Comprehensive Plan sections and public input received during and in advance of the meetings
2. Will assist the planning consultant with the evaluation of “open sourced” public input and with synthesizing all materials and inputs as they review plan language and proposed revisions
3. Will be asked to review materials provided in advance of meetings
4. Primarily engaged in reviewing and commenting on (rather than writing) draft plan language
5. **Act in the best interest of the Village; not as an individual**

# TENTATIVE MEETING SCHEDULE & TOPICS

## Tentative Meeting Schedule

OCTOBER Plan Process, Existing Conditions

NOVEMBER Survey, Land Use + Transect Model

DECEMBER Transportation

JANUARY Utility Infrastructure

FEBRUARY Parks, Recreation, Open Space

MARCH Economic Development

APRIL Public Services - Police, Fire, Roads

## Meeting Topics



Land Use



Transportation  
& Mobility



Housing



Parks &  
Recreation



Environment



Economic  
Development

---

# COMPREHENSIVE CREATION AND ADOPTION PLAN PROCESS



---

# PURPOSE & USE OF THE COMPREHENSIVE PLAN



A document designed to guide the future actions of the Village.



Presents a vision for the future with long-range goals and objectives for all activities that affect the Village.



Includes guidance on how to make decisions on public and private land development proposals.

# WHAT A COMPREHENSIVE PLAN IS NOT

Zoning Ordinance

Subdivision Regulations

Instigator of Development



---

# PRIOR PLANNING

## 2008 COMPREHENSIVE PLAN



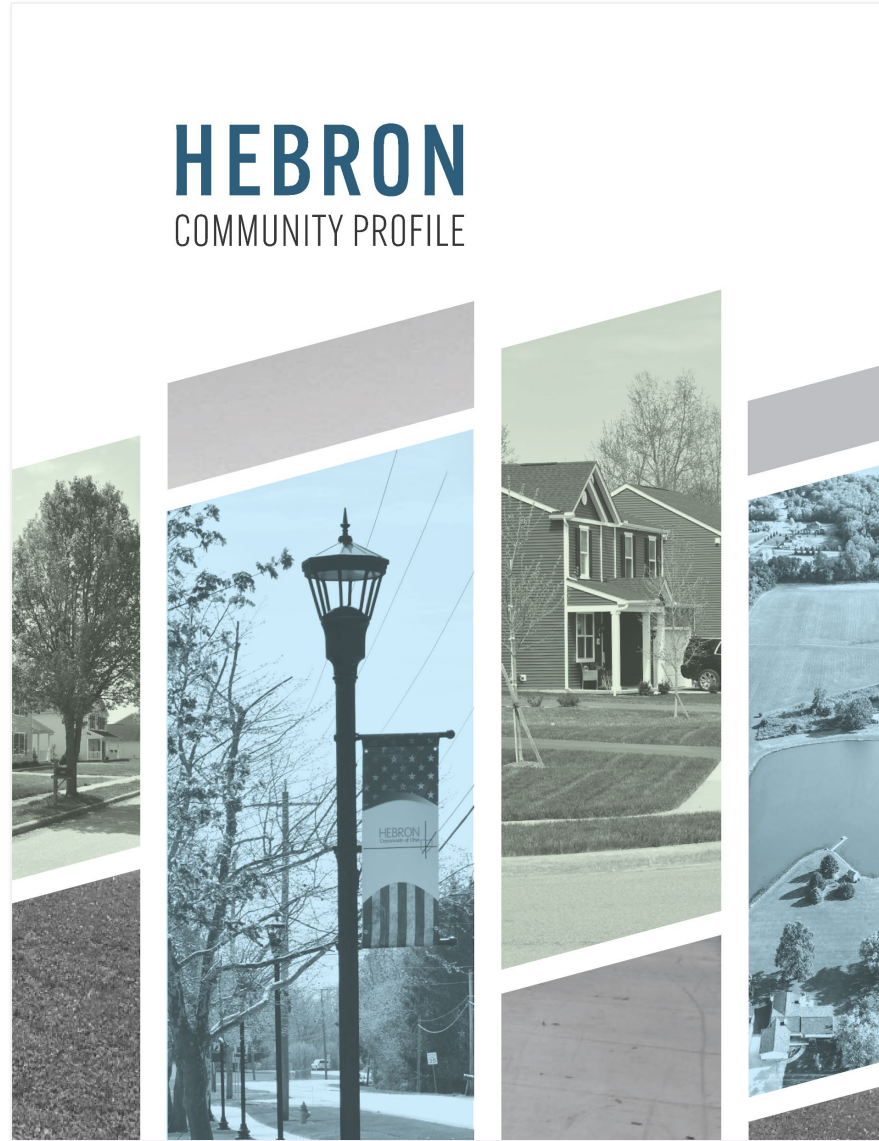
“Hebron—Historic Crossroads of Ohio”

Community Vision for Future Development

---

# PRIOR PLANNING

# 2022 COMMUNITY PROFILE



---

# PROJECT WEBSITE

## HEBRON, OHIO COMPREHENSIVE PLAN



<https://www.neighborhoodstrategies.co/hebron-comprehensive-plan>

# EXISTING CONDITIONS OVERVIEW

## Age

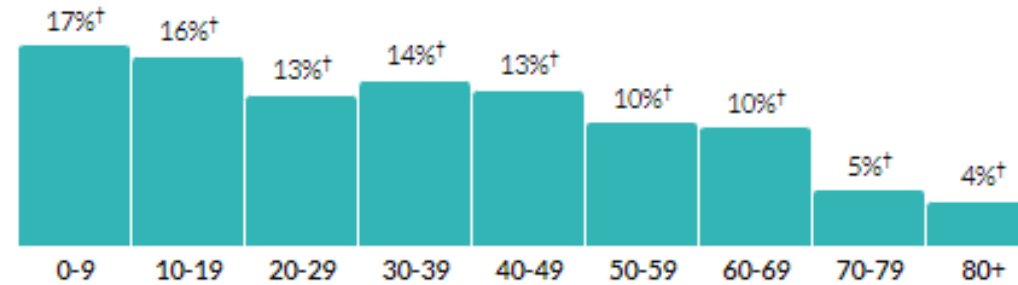
# 32.6

### Median age

about 90 percent of the figure in the Columbus, OH Metro Area: 36.1

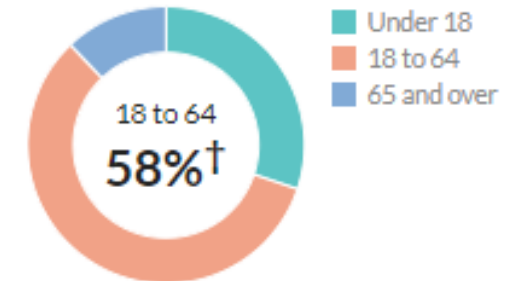
about 80 percent of the figure in Ohio: 39.5

#### Population by age range



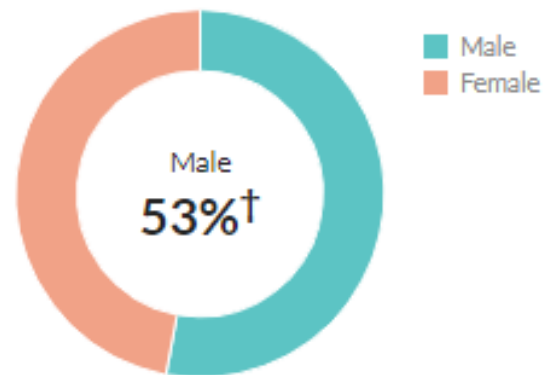
[Show data / Embed](#)

#### Population by age category



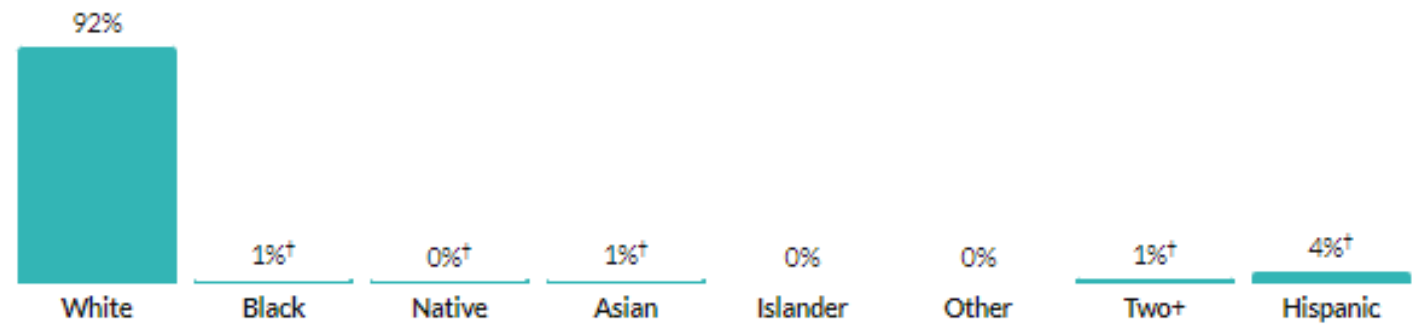
[Show data / Embed](#)

## Sex



[Show data / Embed](#)

## Race & Ethnicity



\* Hispanic includes respondents of any race. Other categories are non-Hispanic.

[Show data / Embed](#)

## Income

# \$22,139

### Per capita income

about three-fifths of the amount in the Columbus, OH Metro Area: \$35,394

about two-thirds of the amount in Ohio: \$32,465

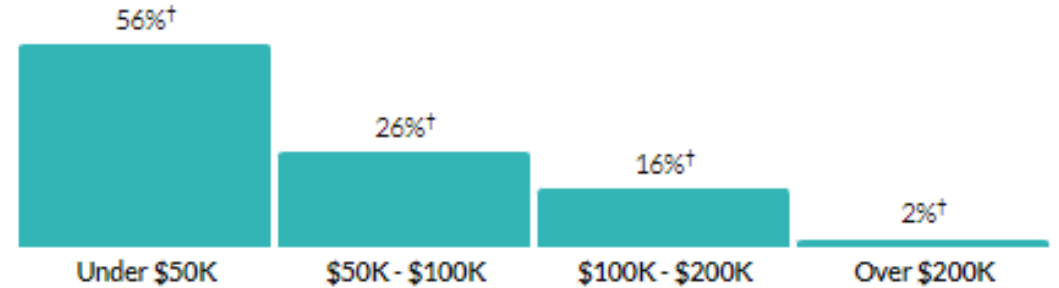
# \$41,739

### Median household income

about three-fifths of the amount in the Columbus, OH Metro Area: \$66,715

about three-quarters of the amount in Ohio: \$58,116

## Household income



[Show data / Embed](#)

## Poverty

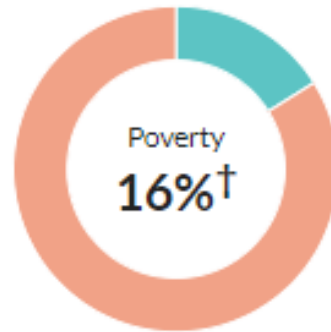
# 13.6%

### Persons below poverty line

about 10 percent higher than the rate in the Columbus, OH Metro Area: 12.7%

about the same as the rate in Ohio: 13.6%

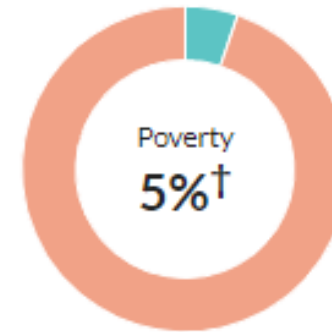
### Children (Under 18)



■ Poverty  
■ Non-poverty

[Show data / Embed](#)

### Seniors (65 and over)



■ Poverty  
■ Non-poverty

[Show data / Embed](#)

## Units & Occupancy

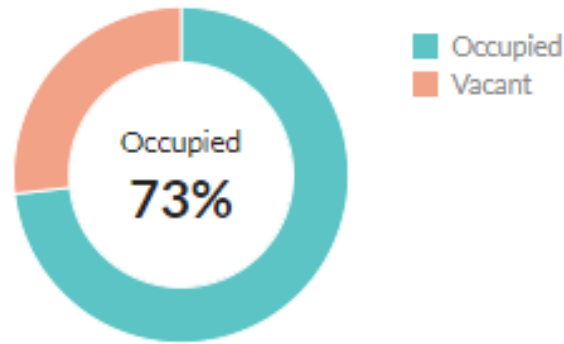
# 1,213

### Number of housing units

the Columbus, OH Metro Area: 869,406

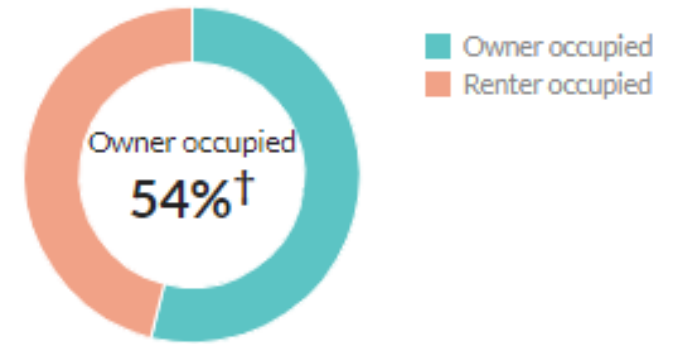
Ohio: 5,217,090

### Occupied vs. Vacant



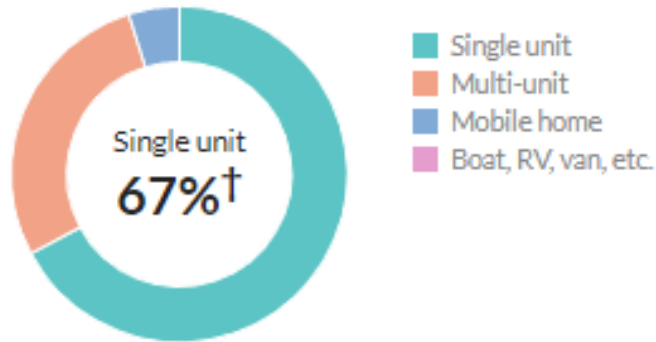
[Show data / Embed](#)

### Ownership of occupied units



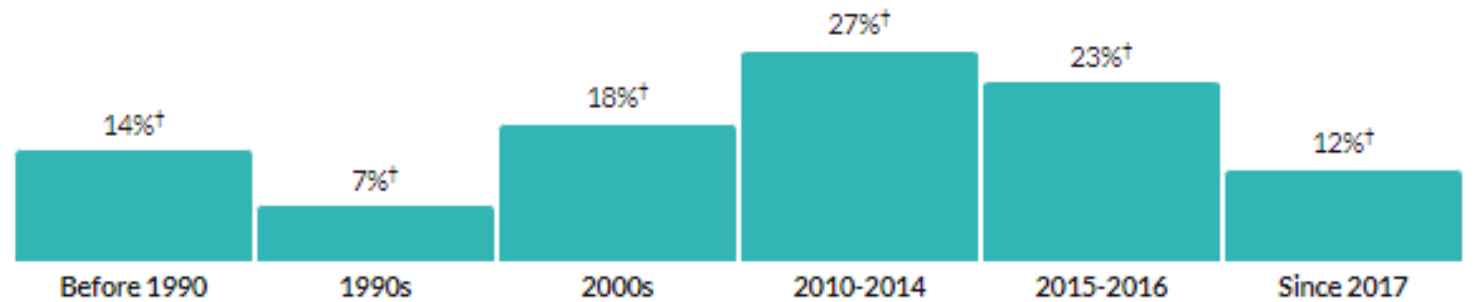
[Show data / Embed](#)

### Types of structure



[Show data / Embed](#)

### Year moved in, by percentage of population



[Show data / Embed](#)

## Value

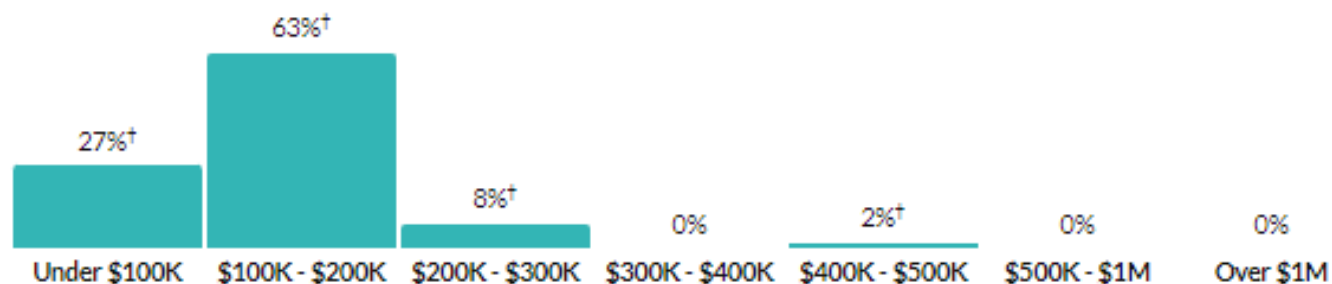
# \$128,500

### Median value of owner-occupied housing units

about two-thirds of the amount in the Columbus, OH Metro Area: \$195,900

about 80 percent of the amount in Ohio: \$151,400

#### Value of owner-occupied housing units



[Show data / Embed](#)

## Educational attainment

# 92.4%

### High school grad or higher

about the same as the rate in the Columbus, OH Metro Area: 91.7%

about the same as the rate in Ohio: 90.8%

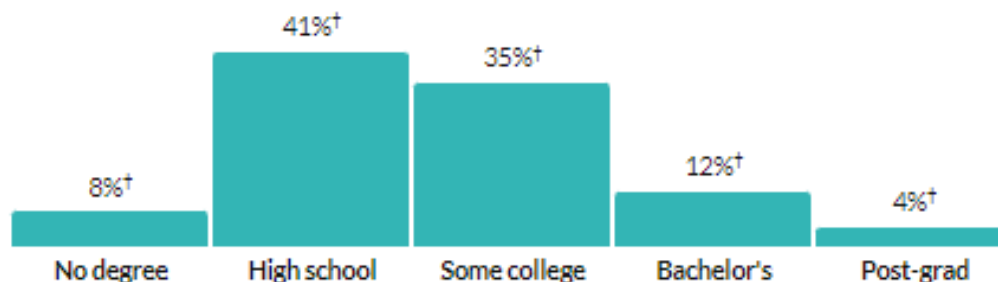
# 16.2%

### Bachelor's degree or higher

about two-fifths of the rate in the Columbus, OH Metro Area: 37.3%

about three-fifths of the rate in Ohio: 28.9%

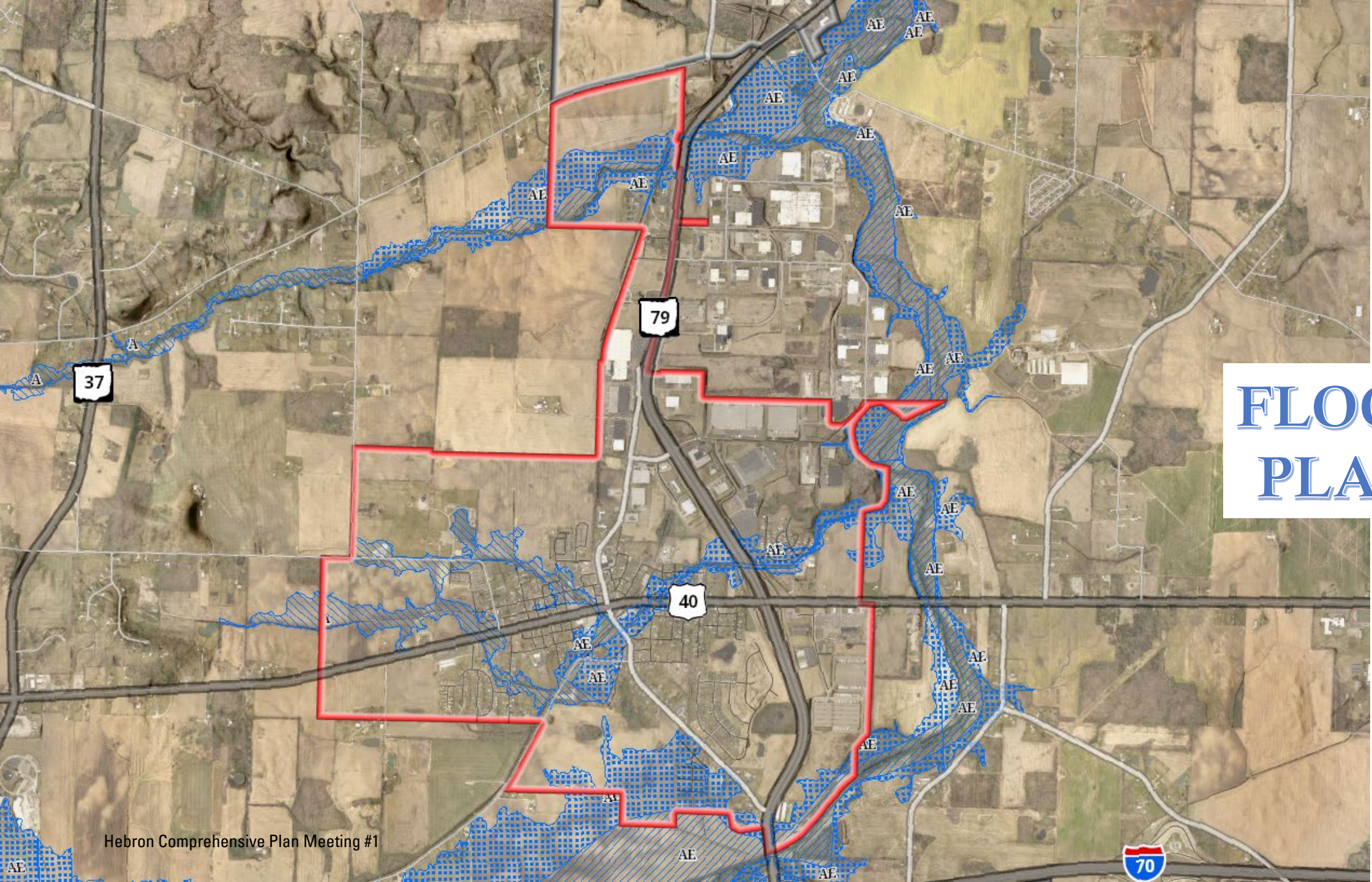
#### Population by highest level of education



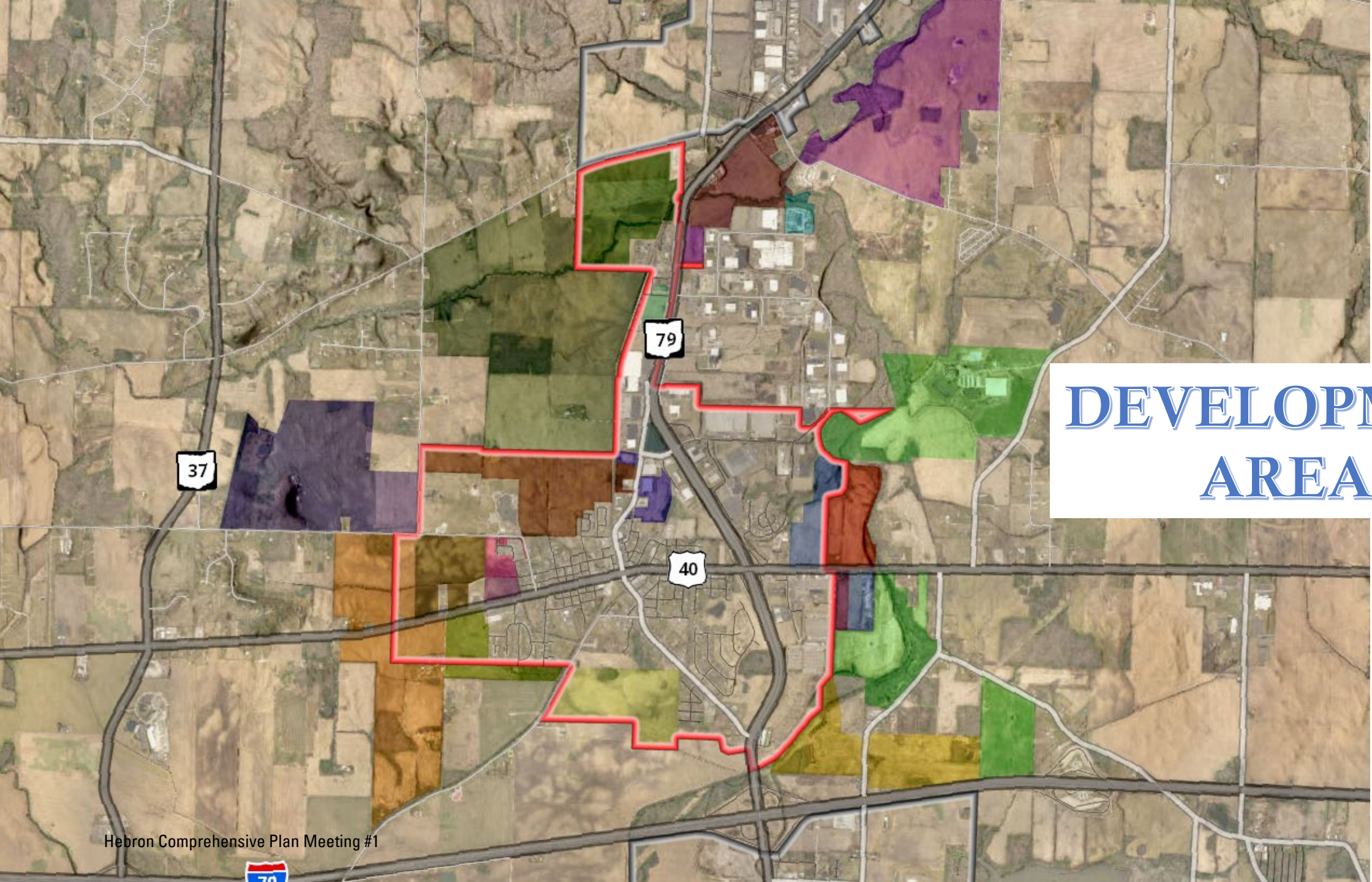
\* Universe: Population 25 years and over

[Show data / Embed](#)

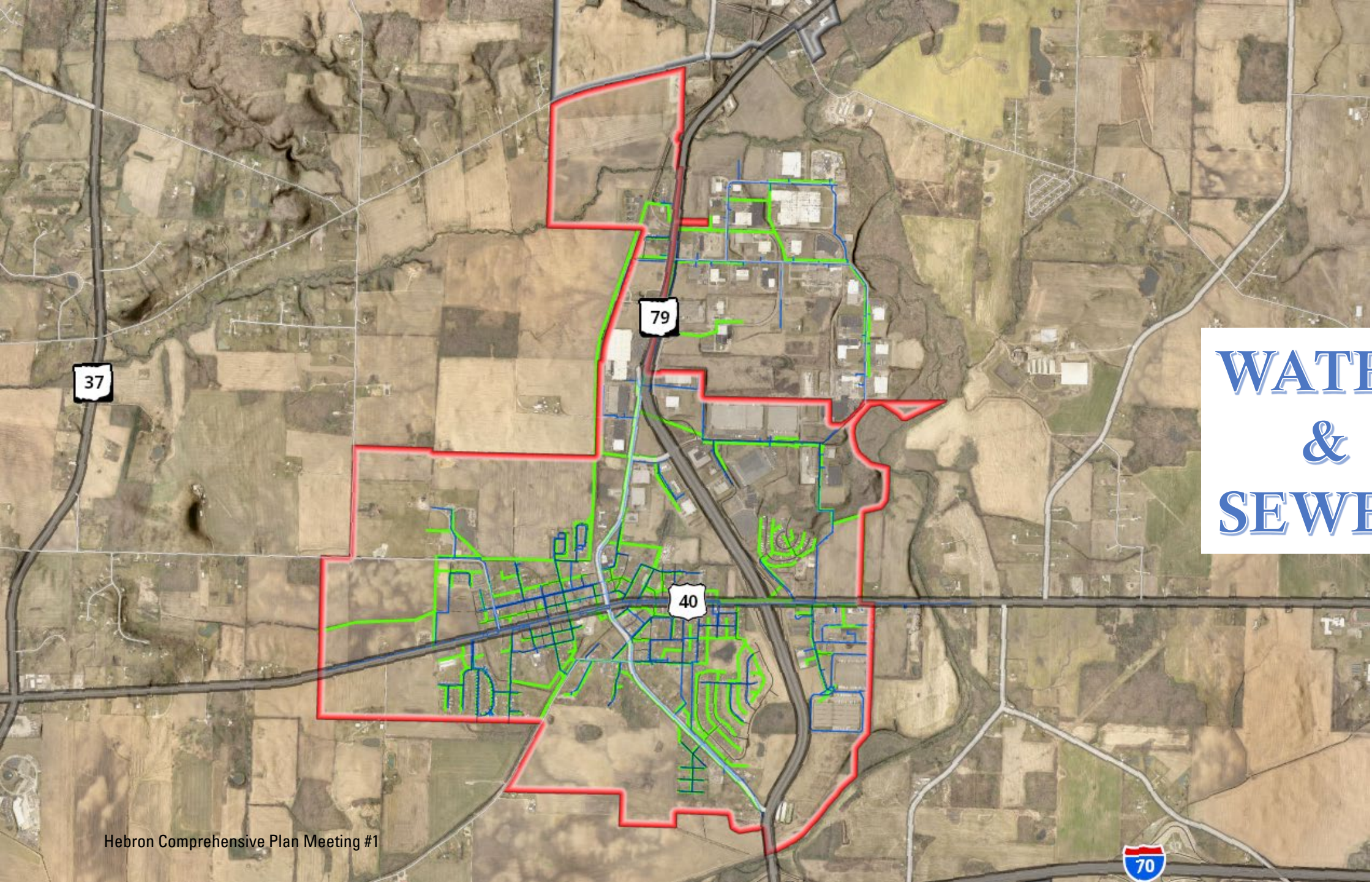




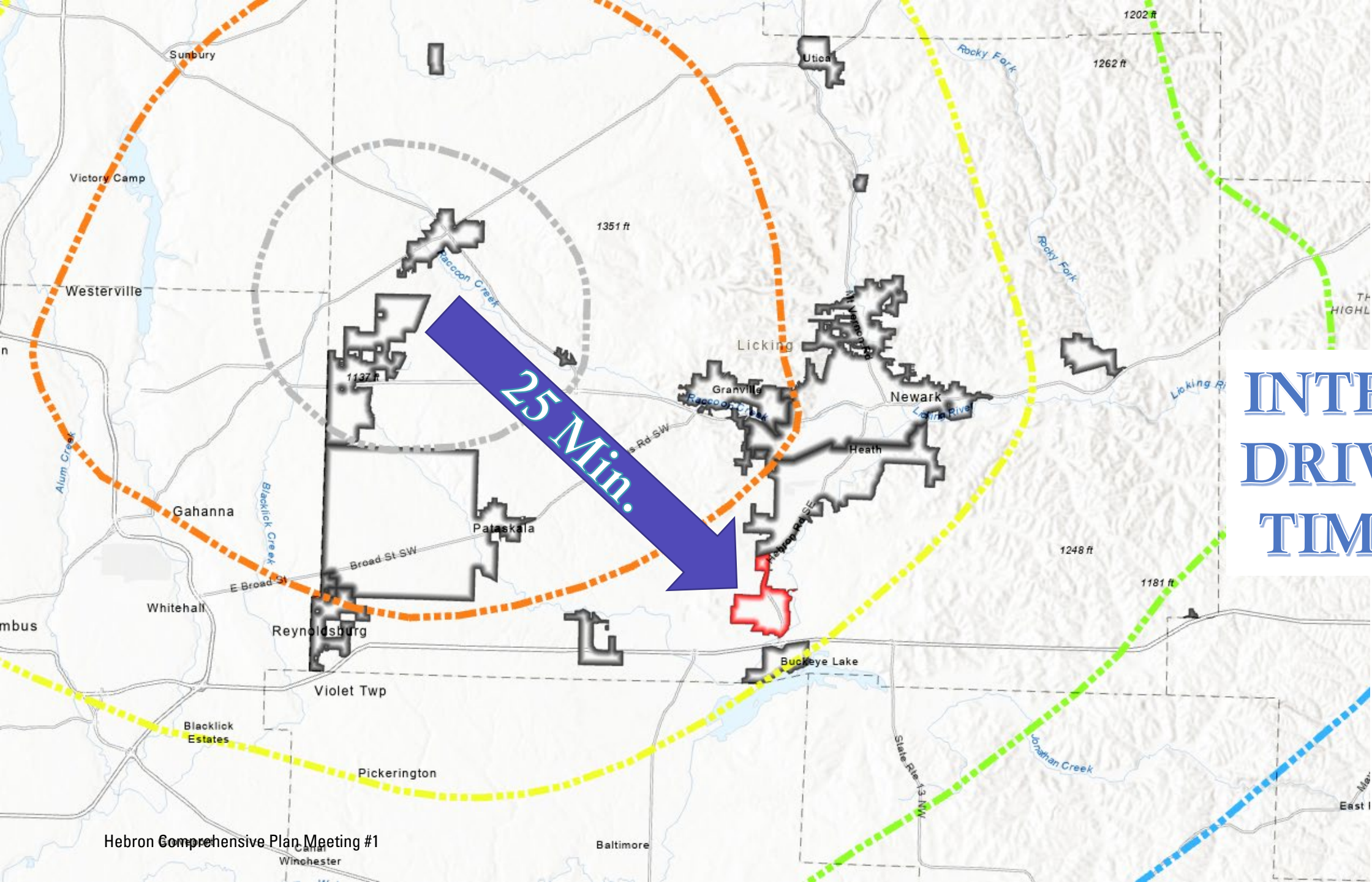
# FLOOD PLAIN



# DEVELOPMENT AREAS



# WATER & SEWER



**INTEL  
DRIVE  
TIME**

# COMMITTEE INPUT SESSION

- Big Ideas
- Concerns
- Interests

# NEXT STEPS

1. Draft Existing Conditions Text
2. Draft Community Survey
  - Online via Survey Monkey
  - Paper copies?