



VILLAGE OF HEBRON

COMPREHENSIVE PLAN

Meeting Agenda

Committee Meeting #5
March 21, 2023 @ 5:30pm
934 W. Main Street Hebron, OH 43025

-
1. Welcome & Introductions
 2. Growth Boundary Review
 3. Future Land Use Review
 4. Transportation Review
 5. Utility Planning
 6. Adjourn

Future Meeting Topics

- ~~October - Intro, Plan Process, Existing Conditions~~
- ~~November - Survey, Land Use + Transect Model~~
- ~~December - No Meeting~~
- ~~January - Future Land Use + Transportation~~
- ~~February - Utility Infrastructure~~
- **March - Parks, Recreation, Open Space**
- April - Economic Development
- May - Public Services - Police, Fire, Roads

General

Growing communities should be aware of the costs associated with maintaining their infrastructure as their population increases. These costs can include repairs and upgrades to existing roads and bridges, water and sewage systems, electrical infrastructure, and public transportation systems. Additionally, growing communities may need to invest in new infrastructure such as additional sidewalks, bike lanes, parking lots, government buildings, or other public facilities. It is important for a growing community to have an ongoing plan for maintaining their infrastructure in order to ensure that it can accommodate the increasing population and provide necessary services.

Key Aspects to Park and Recreation Planning

According to the resource guide section of IPA's *Healthy Communities: A Resource Guide for Delaware Municipalities* publication, successful master plans must be financially feasible, environmentally compatible, balanced, technically sound, responsive and flexible. The plan should describe how it is or will:

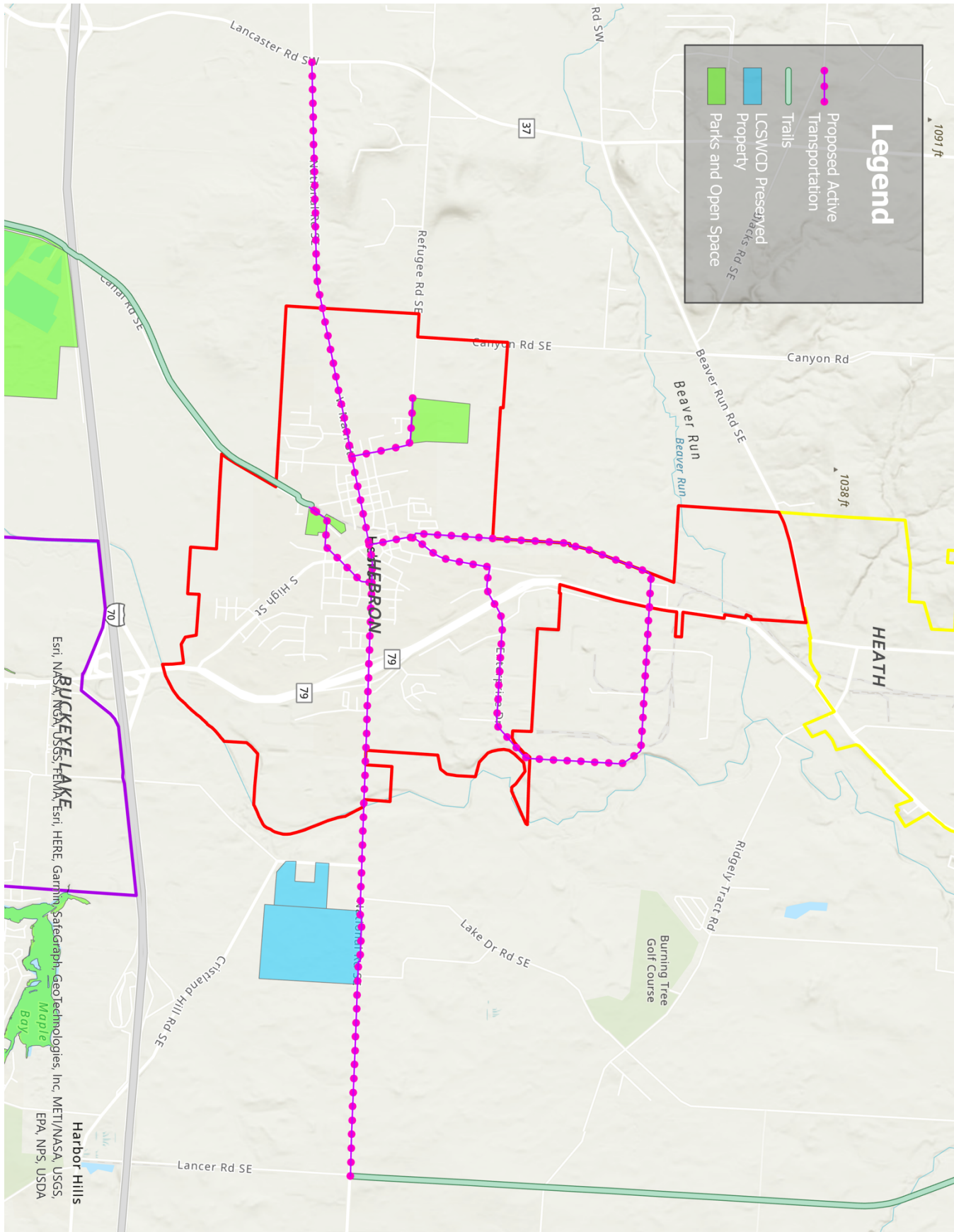
1. Be consistent with and/or advance the goals of local, county, regional, and state plans;
2. Be responsive to the interests of citizens and diverse groups of stakeholders;
3. Implementable, lead to a shared vision for community livability, and provide recommendations for land-use policy, parks development and rehabilitation, and natural resource conservation;
4. Be adaptable to future changes in conditions;
5. Lead to a shared vision for recreation and conservation among all stakeholders and guide future implementation;
6. Address needs based upon the demographics of the community/region, including low- income, minority, and special-needs populations;
7. Address the need for ADA accessibility (e.g., facilities, sites, and programs);
8. Create opportunities for citizens to connect to open space, greenways, parks, and conservation areas;
9. Strengthen connections between recreation, healthy lifestyles, and economic benefits in communities;
10. Reconnect people to the outdoors and foster environmental stewardship;
11. Leverage investment of resources, partnerships, and funding; and
12. Support environmental sustainability, conservation, and green practices

When **planning for parks and recreation**, there are several key components to consider. These include determining the size and location of parks, as well as amenities such as playgrounds, walking paths, and sports fields. Additionally, it is important to think about the safety and security of these spaces by considering lighting and surveillance systems or even hiring park staff to provide extra support. Finally, communities should plan for the maintenance of their parks by identifying the necessary funds for necessary repairs or upgrades over time. Each of these elements must be considered in order to create a

comprehensive plan for parks and recreation that will serve a community's needs now and into the future.

Active transportation such as walking and cycling can have a positive impact on a community. These forms of transportation are environmentally friendly, reduce traffic congestion and air pollution, improve public health, and promote physical activity. Additionally, active transportation has the potential to create jobs in the form of bike lanes construction or bike-share programs. Finally, providing alternative forms of transportation encourages citizens to become more connected with their communities and to engage in civic activities. By taking advantage of active transportation, communities can enjoy many positive benefits while reducing their dependence on automobile use.

If fewer people are interested in driving cars in a community, the biggest impact can be seen in terms of traffic congestion and air pollution. With fewer cars on the roads, there is less potential for traffic jams or long commutes. Additionally, decreased car use leads to lower levels of air pollution; this can result in better public health outcomes, including fewer respiratory illnesses. It can also lead to more pedestrian-friendly environments with sidewalks and bike lanes that promote active transportation and physical activity. Furthermore, communities that reduce their reliance on automobile use may experience an increased sense of community connection and civic engagement as citizens embrace alternative forms of transportation.



Hebron Economic Development

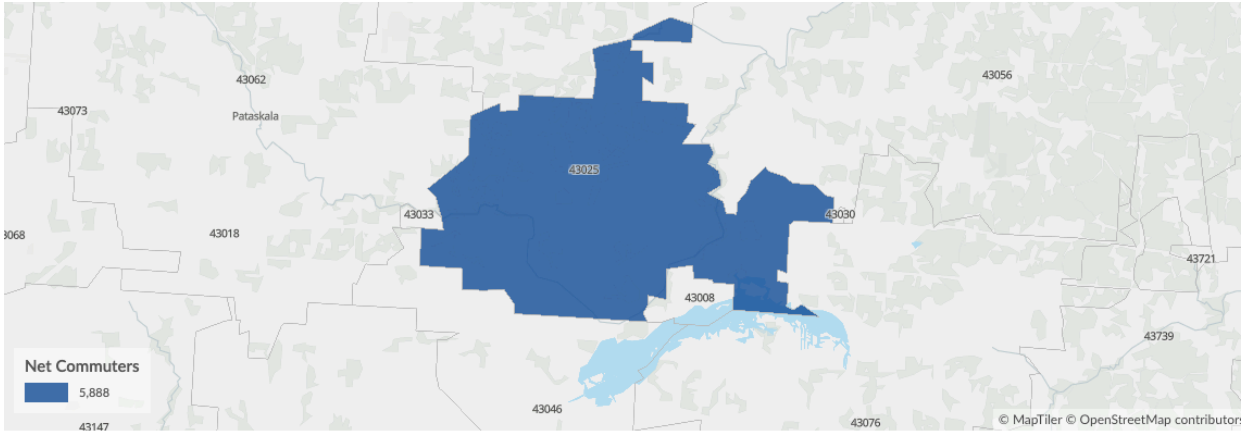
A community should focus on economic development in order to provide its residents with more job opportunities and greater economic stability. Economic development can involve a range of initiatives such as providing incentives to attract new businesses, improving infrastructure, providing grants or loans to local businesses, and investing in education and training programs. By focusing on economic development, a community can ensure that it is creating an environment where businesses are successful and people have access to good jobs. This can lead to increased wealth for the entire community and improved standards of living for all of its citizens.

As of 2022 the region's population increased by 6.4% since 2017, growing by 441. Population is expected to increase by 1.7% between 2022 and 2027, adding 122.

From 2017 to 2022, jobs increased by 38.9% in Hebron, OH (ZIP 43025) from 6,601 to 9,167. This change outpaced the national growth rate of 2.4% by 36.5%.

The top three industries in 2022 are Education and Hospitals (Local Government), Soap, Cleaning Compound, and Toilet Preparation Manufacturing, and Local Government, Excluding Education and Hospitals.

The Hebron zip code has +5,888 net commuters each day.



Where Talent Works			Where Talent Lives		
ZIP	Name	2022 Employment	ZIP	Name	2022 Workers
43025	Hebron, OH (in Licking county)	9,167	43025	Hebron, OH (in Licking county)	3,279

[More Detail](#)
[More Detail](#)



Police, Fire, Roads

Police - The police department consists of a Chief, Lieutenant, Sergeant, and six full time officers. Three part time and four auxiliary officer positions also exist.

As population grows, police forces are affected in two primary ways. Firstly, larger populations require more police officers to maintain public safety and provide law enforcement services. This means that police departments need to increase their staffing levels in order to meet the demands of the local population. Secondly, as communities become more densely populated, crime may begin to increase due to a higher population density. This means that police departments must adapt their strategies and adjust their resources accordingly in order to be able to effectively combat crime in a growing population.

Roads - The Village maintains 13.6 miles of road within the Village. The Village does not maintain SR 79 or US 40.

When planning for the growth of a community's roadway system, it is important to consider both short-term and long-term needs. In the short-term, communities should focus on making sure that existing roads are maintained and improved where necessary. This could include more efficient traffic flow management measures (e.g., traffic lights, signage, etc.), as well as improved infrastructure such as widening or resurfacing roadways in areas with high volumes of cars or pedestrians. In the long-term, it is important to plan for growth of the roadway system by ensuring that new roads are built to accommodate future population growth. This could involve detailed planning of roadways to ensure that they are wide enough and constructed to handle expected volumes of traffic, as well as exploring alternative transportation options such as public transportation or bike paths.

Increased roads can have a significant impact on local traffic patterns, both positively and negatively. On the positive side, additional roads can help reduce congestion and provide better overall mobility options for residents. This can lead to improved access to jobs, schools, shopping areas and other services that are important for the local population. On the negative side, increased roadways can also lead to more pollution due to increased vehicle usage, as well as pose safety risks due to higher speed limits or intersections that are insufficiently designed or maintained. Furthermore, increased roadways can also lead to increases in noise levels from vehicles and disruption of existing urban spaces.

Fire - The Village contracts with West Licking Joint Fire District for fire coverage.

As population grows, fire departments are affected in several ways. Firstly, larger populations require more firefighters to respond to emergency calls and provide protection for the community. This means that fire departments need to increase their staffing levels in order to meet the needs of the local population. Additionally, as communities become more densely populated, there is an increased risk of fire due to a higher population density. This means that fire departments must adapt their strategies and adjust their resources accordingly in order to be able to effectively prevent and contain fires in a growing population. Furthermore, as population increases so does the demand for new infrastructure such as

roads and public buildings which must also be identified by fire departments and incorporated into their planning processes.

