

MADISON TOWNSHIP

Comprehensive Plan

CAC Meeting #1

September 6, 2022

5:30pm

MEETING AGENDA

1. Welcome & Introductions
2. Role of the Citizen Advisory Committee (CAC)
3. Tentative Meeting Schedule & Topics
4. Purpose & Use of the Comprehensive Plan
5. Comprehensive Creation and Adoption Plan Process
6. Project Website
7. Existing Conditions Overview
8. Committee Input Session
9. Issues & Opportunities
 - I. Big Ideas
 - II. Next Steps
 - III. Adjourn

WELCOME AND INTRODUCTIONS

Township Trustees

Township Staff

CAC Members

Neighborhood Strategies

ROLE OF CITIZEN ADVISORY COMMITTEE

1. Will review Comprehensive Plan sections and public input received during and in advance of the meetings
2. Will assist the planning consultant with the evaluation of “open sourced” public input and with synthesizing all materials and inputs as they review plan language and proposed revisions
3. Will be asked to review materials provided in advance of meetings
4. Primarily engaged in reviewing and commenting on (rather than writing) draft plan language
5. **Act in the best interest of the Township; not as an individual**

TENTATIVE MEETING SCHEDULE & TOPICS

Tentative Meeting Schedule

09/06/22 Intro, Plan Process, Existing Condition
10/04/22 Survey, Land Use + Transect Model
11/01/22 Transportation
12/06/22 Utility Infrastructure
01/03/22 Parks, Recreation, Open Space
07/07/22 Economic Development
03/07/22 Public Services - Police, Fire, Roads

Meeting Topics



Land Use



Transportation
& Mobility



Housing



Parks &
Recreation



Environment



Economic
Development

COMPREHENSIVE CREATION AND ADOPTION PLAN PROCESS



PURPOSE & USE OF THE COMPREHENSIVE PLAN



A document designed to guide the future actions of the Township.



Presents a vision for the future with long-range goals and objectives for all activities that affect the Township.



Includes guidance on how to make decisions on public and private land development proposals.

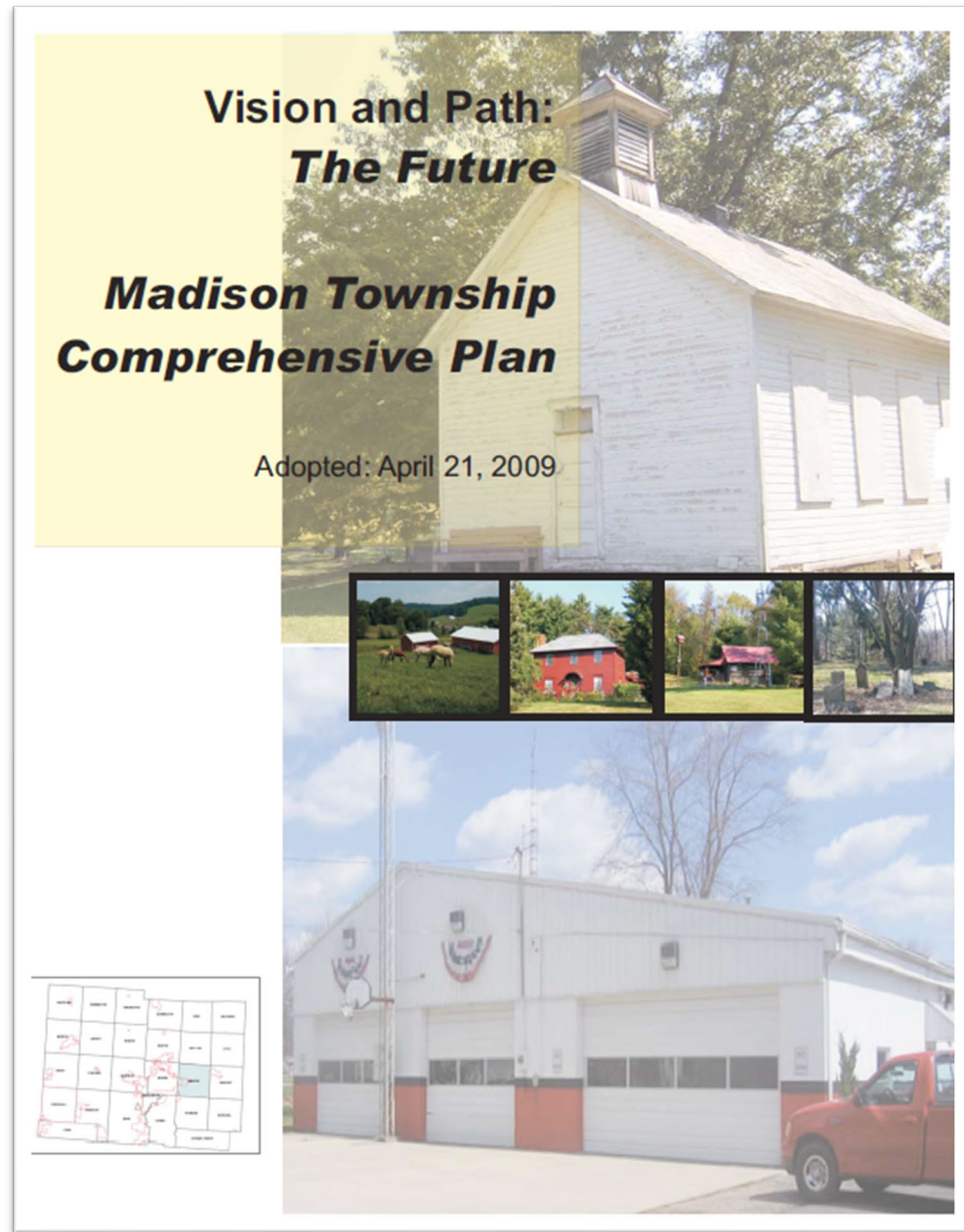
WHAT A COMPREHENSIVE PLAN IS NOT

Zoning Ordinance

Subdivision Regulations

Instigator of Development

PRIOR PLANNING



**Vision and Path:
*The Future***

***Madison Township
Comprehensive Plan***

Adopted: April 21, 2009

The cover features a large photograph of a white wooden church with a steeple. Below the church is a horizontal strip of four smaller images: a field with horses, a red barn, a red building, and a cemetery. At the bottom is a large photograph of a white fire station with a red pickup truck parked in front. In the bottom left corner, there is a small map of Madison Township with a grid overlay.

PROJECT WEBSITE

Home Insights Silicon Heartland Compendium **Neighborhood Strategies** Account in f @



**MADISON
TOWNSHIP**
LICKING COUNTY, OHIO

Madison Township Comprehensive Plan

Providing guidance for the orderly growth,
development and physical appearance of Madison
Township.

<https://www.neighborhoodstrategies.co/madison-township-comprehensive-plan>

EXISTING CONDITIONS OVERVIEW



Populations and People

Total Population

3,248

P1 | 2020 Decennial Census



Employment

Employment Rate

60.9%

DP03 | 2020 American Community Survey 5-Year Estimates



Families and Living Arrangements

Total Households

1,200

DP02 | 2020 American Community Survey 5-Year Estimates



Income and Poverty

Median Household Income

\$57,024

S1901 | 2020 American Community Survey 5-Year Estimates



Housing

Total Housing Units

1,223

H1 | 2020 Decennial Census



Race and Ethnicity

Hispanic or Latino (of any race)

25

P2 | 2020 Decennial Census



Education

Bachelor's Degree or Higher

23.3%

S1501 | 2020 American Community Survey 5-Year Estimates



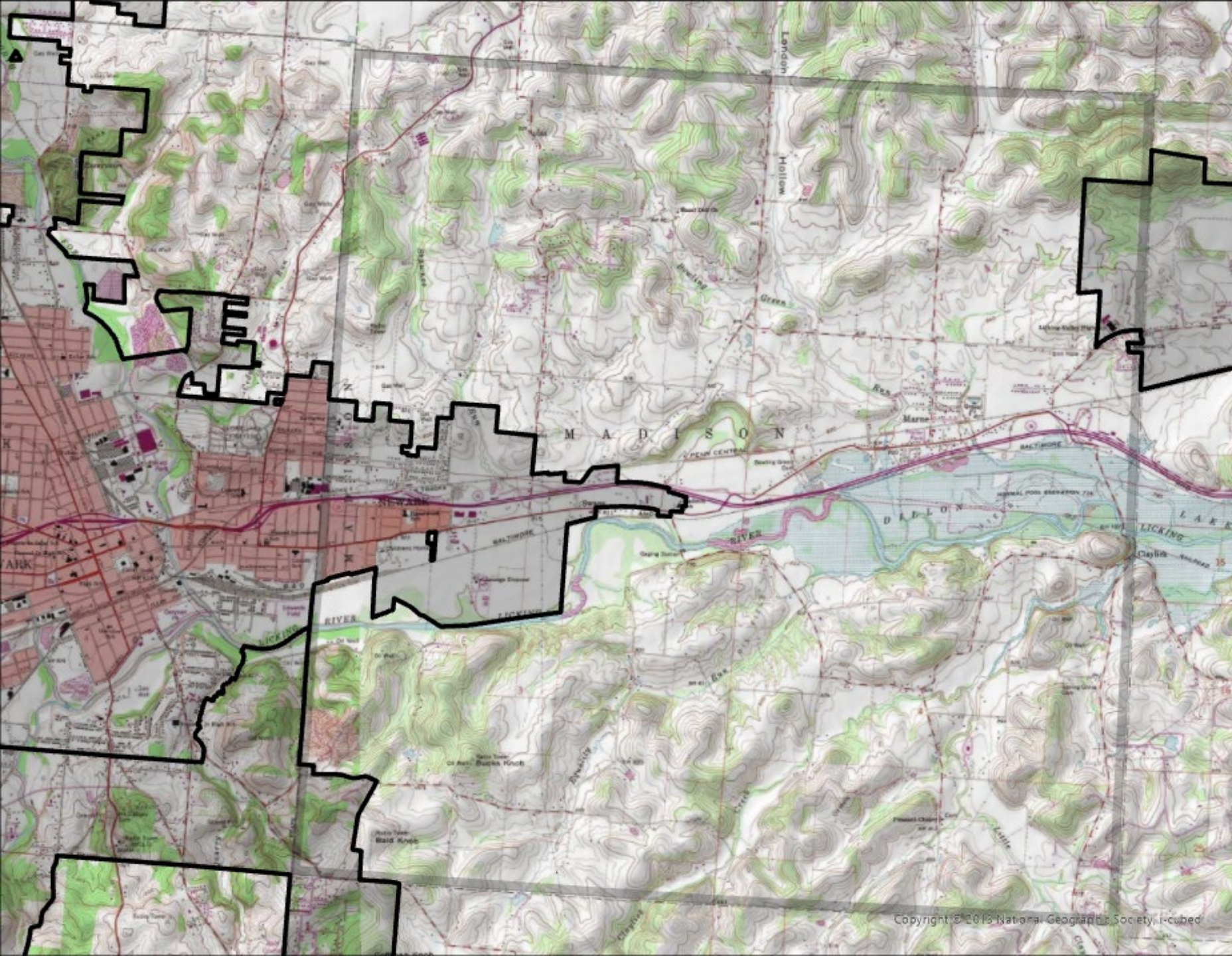
Health

Without Health Care Coverage

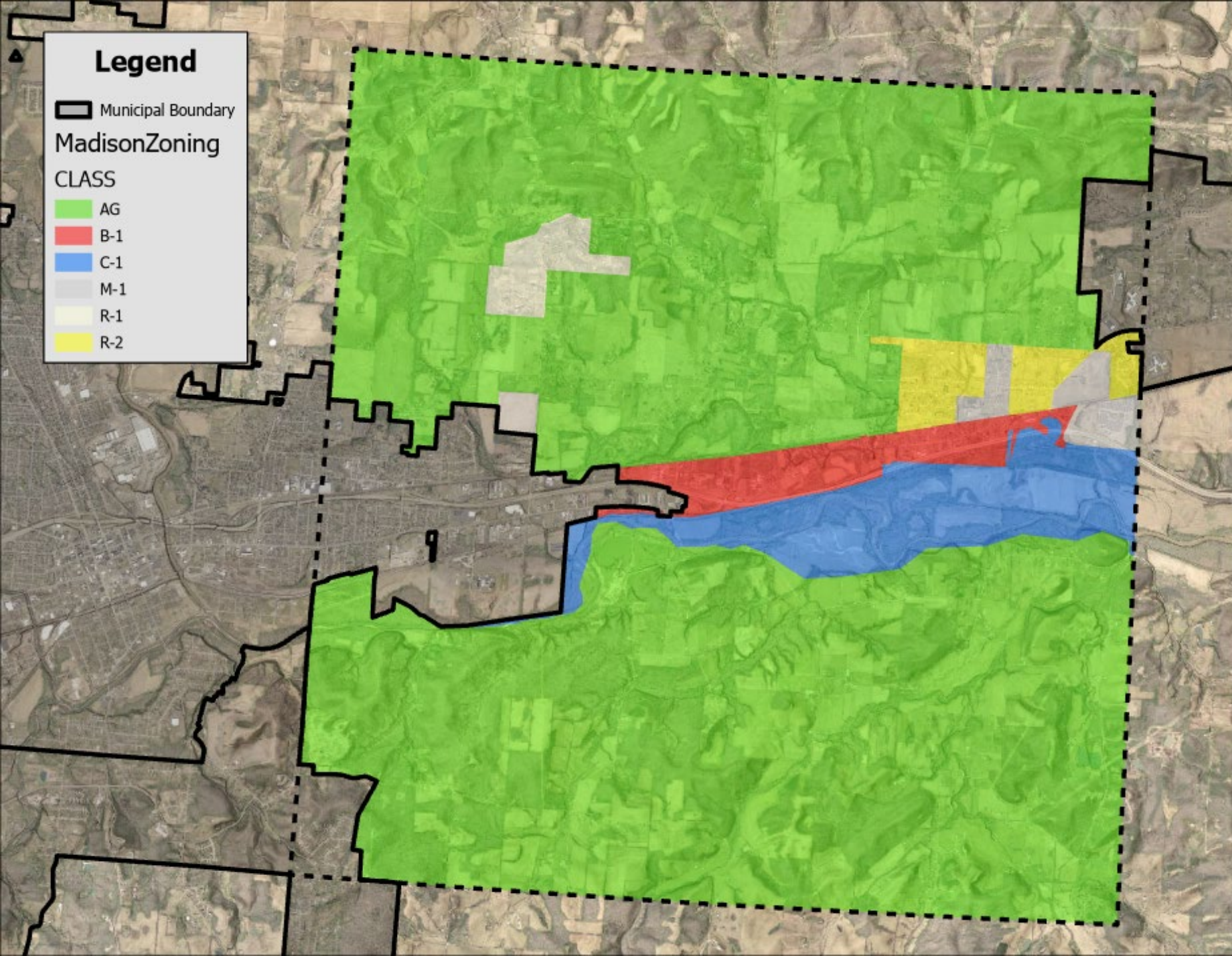
3.4%

S2701 | 2020 American Community Survey 5-Year Estimates

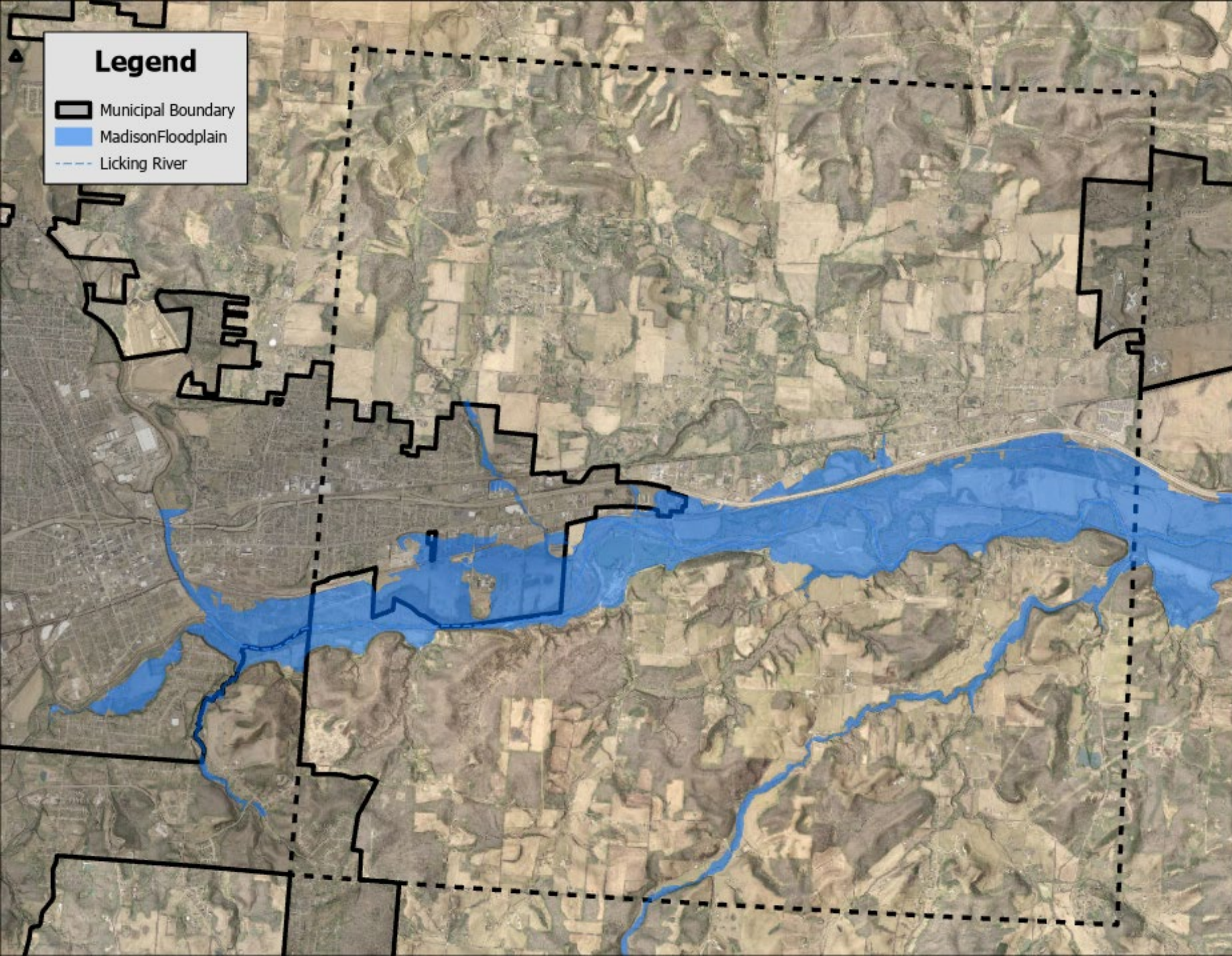
MADISON TOWNSHIP



USGS



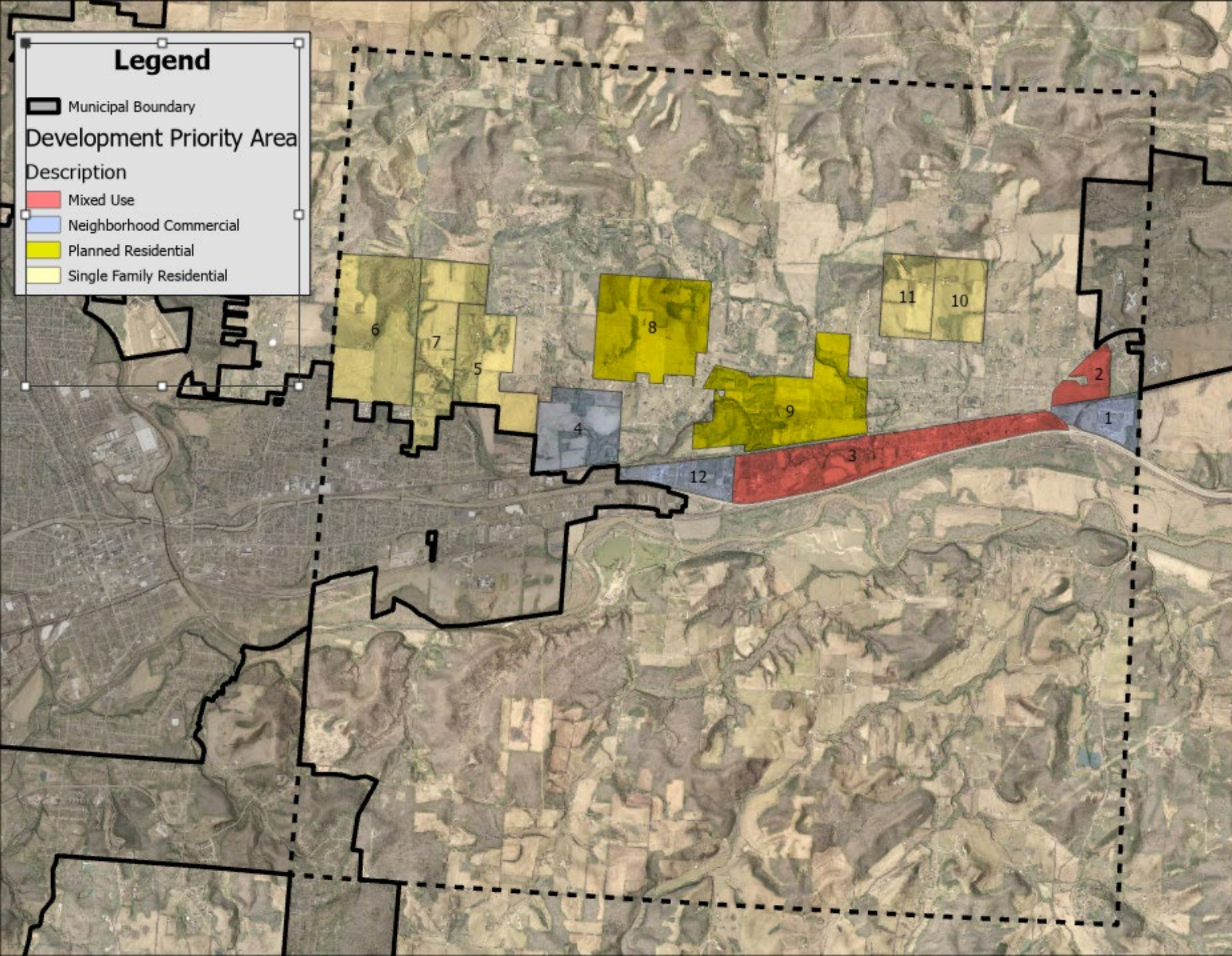
ZONING



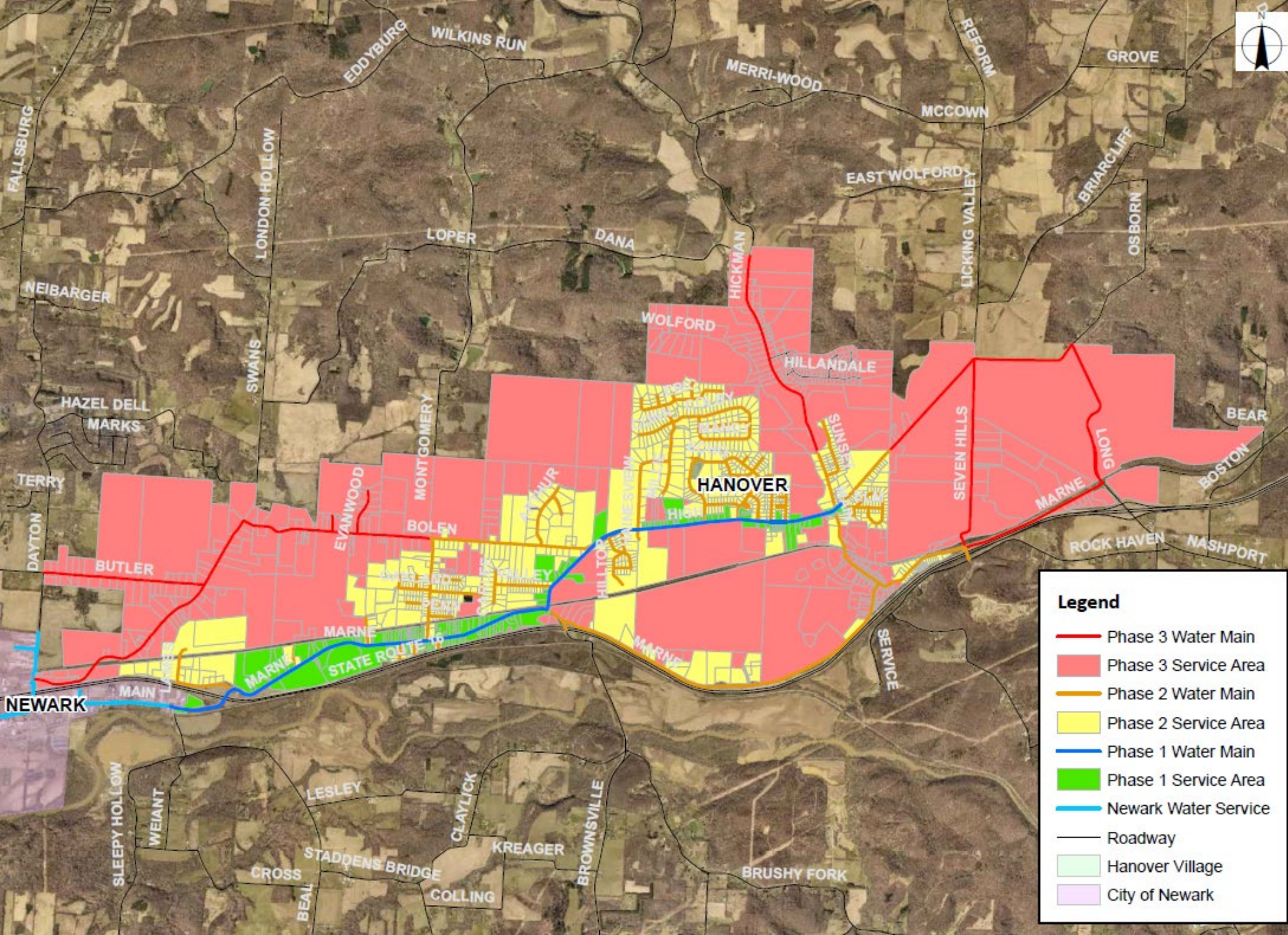
Legend

- Municipal Boundary
- MadisonFloodplain
- Licking River

FLOOD PLAIN



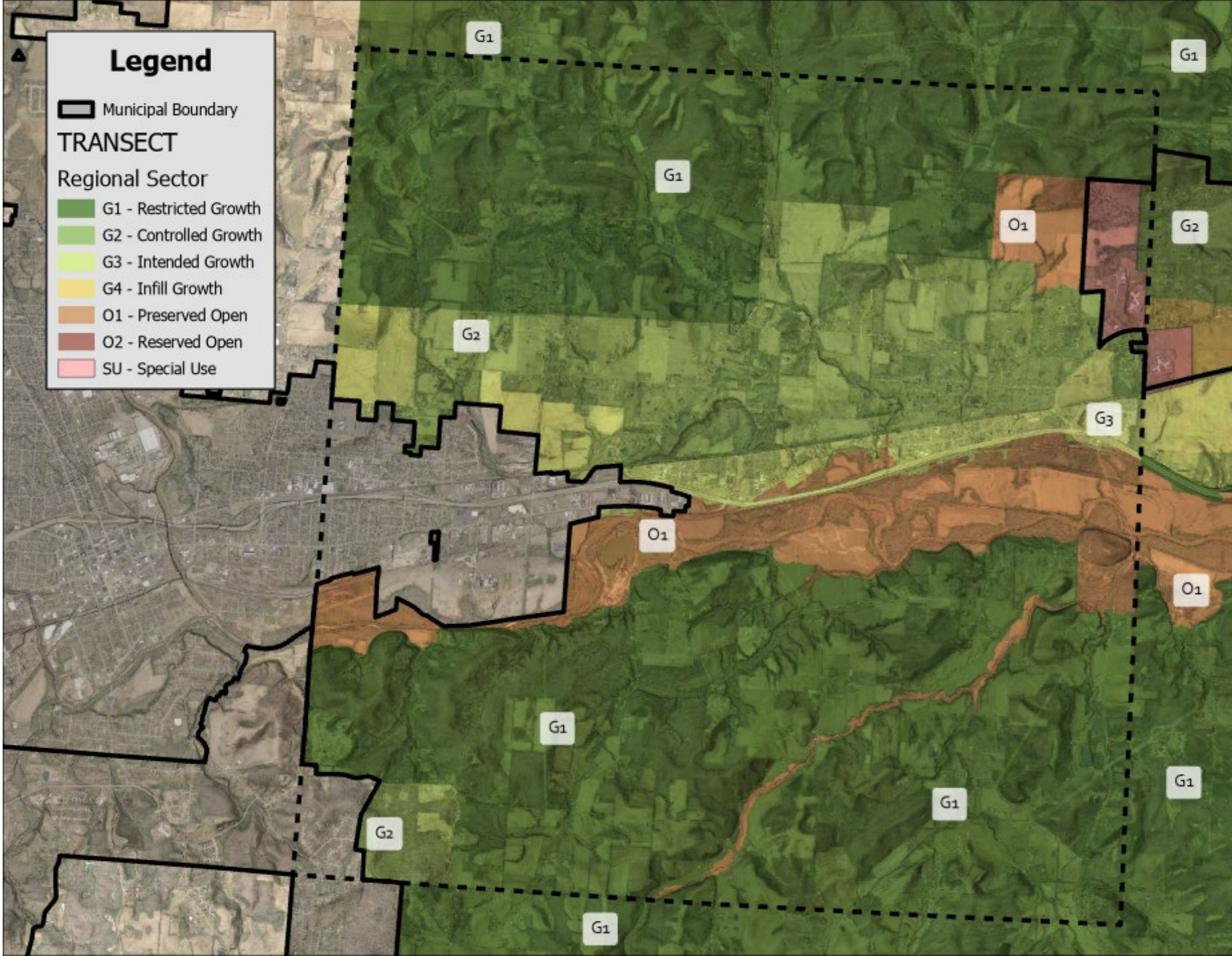
PRIORITY AREA



WATER

Legend

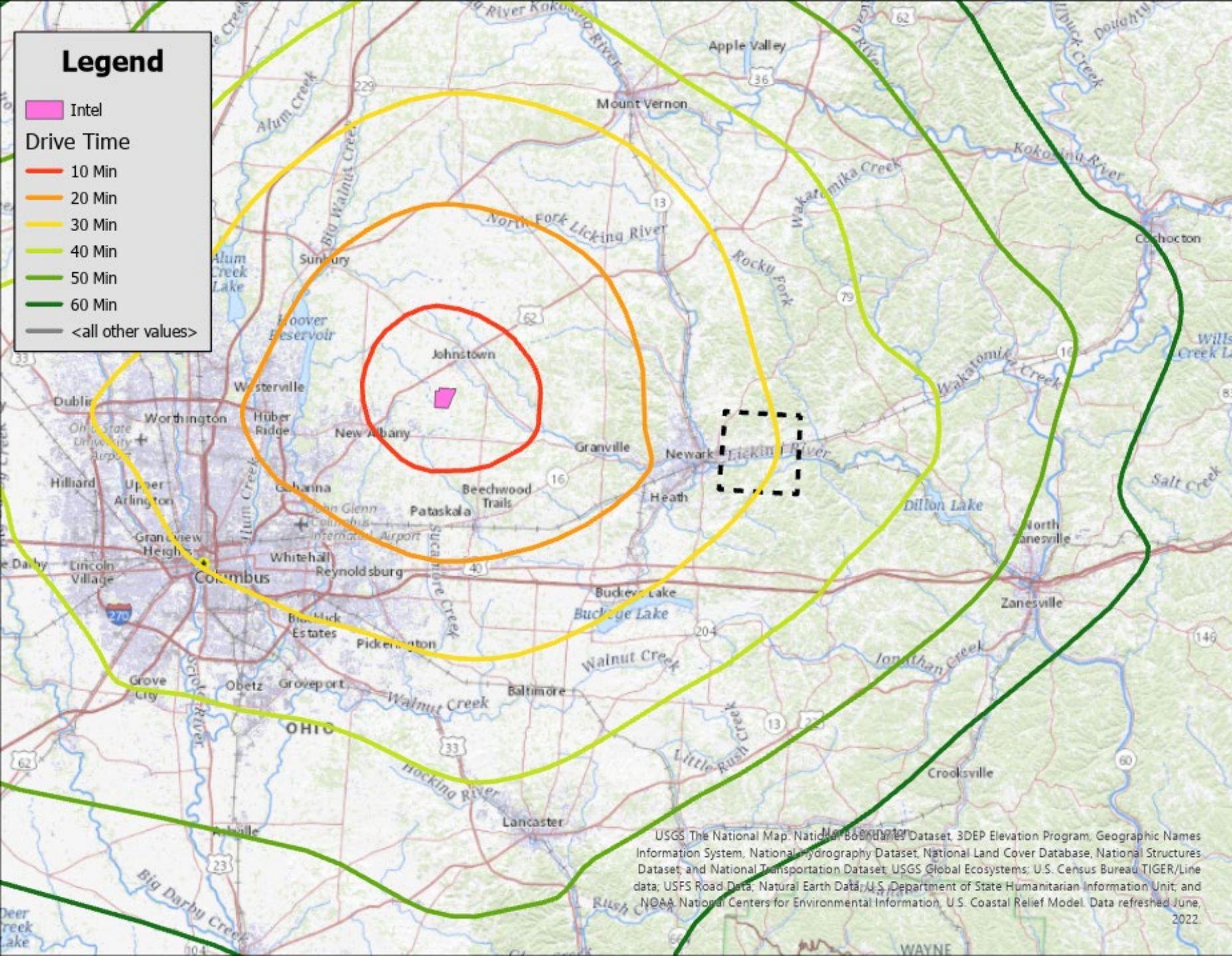
- Phase 3 Water Main
- Phase 3 Service Area
- Phase 2 Water Main
- Phase 2 Service Area
- Phase 1 Water Main
- Phase 1 Service Area
- Newark Water Service
- Roadway
- Hanover Village
- City of Newark



TRANSECT

Legend

- Intel
- 10 Min
- 20 Min
- 30 Min
- 40 Min
- 50 Min
- 60 Min
- <all other values>



INTEL

USGS The National Map, National Elevation Dataset, 3DEP Elevation Program, Geographic Names Information System, National Hydrography Dataset, National Land Cover Database, National Structures Dataset, and National Transportation Dataset; USGS Global Ecosystems; U.S. Census Bureau TIGER/Line data; USFS Road Data; Natural Earth Data; U.S. Department of State Humanitarian Information Unit; and NOAA National Centers for Environmental Information, U.S. Coastal Relief Model. Data refreshed June, 2022.

COMMITTEE INPUT SESSION

INSTRUCTIONS

- Using your phone or laptop, load www.mentimeter.com
- Input code: 8845 1428
- Let's go!

NEXT STEPS

1. Draft Existing Conditions Text
2. Draft Community Survey
 - Online via Survey Monkey
 - Paper copies?