
MEETING #7

AUGUST 24, 2022

ECONOMIC DEVELOPMENT

COMMERCIAL CORRIDORS

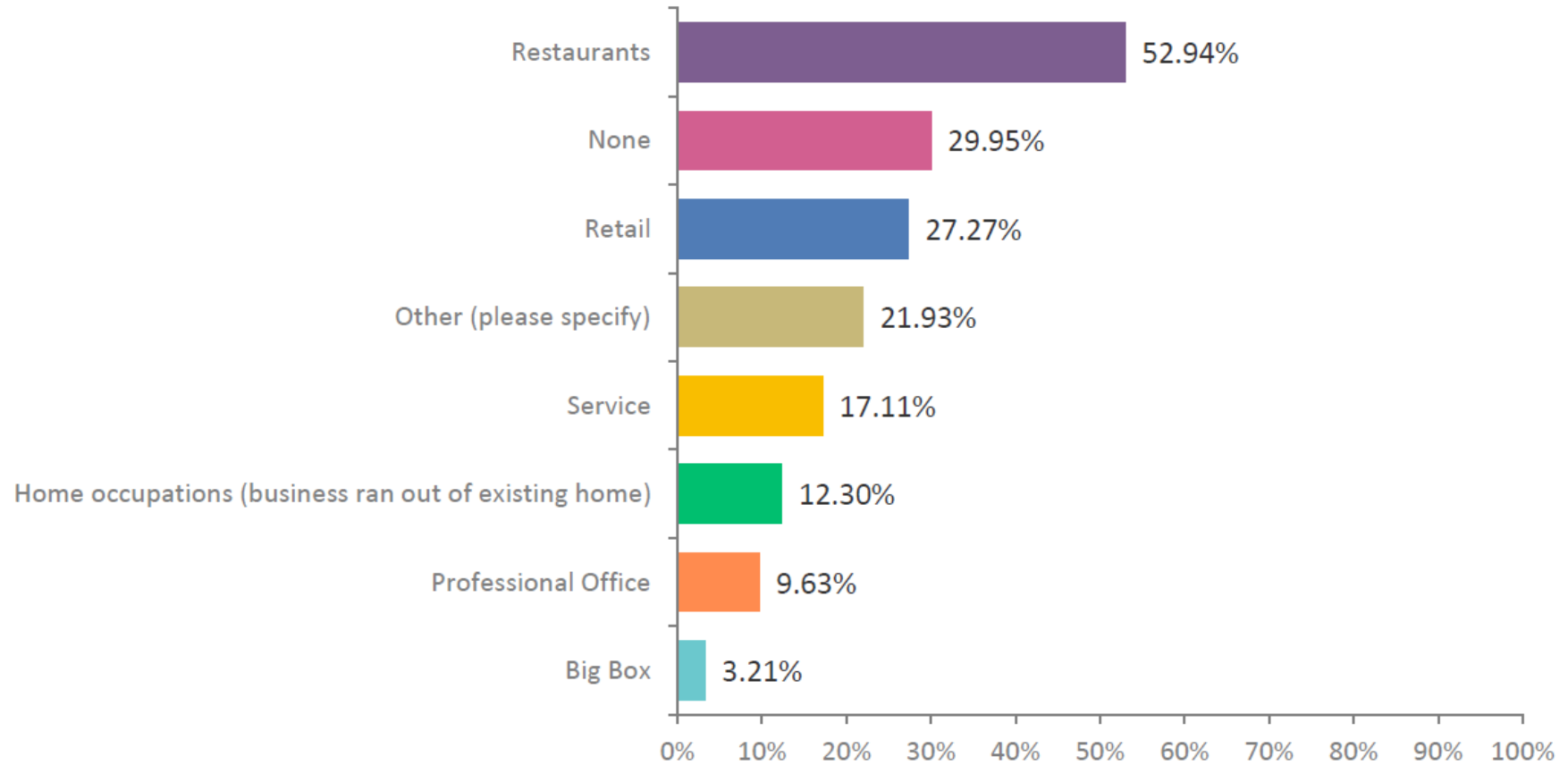


WHAT IS ECONOMIC DEVELOPMENT IN THE VILLAGE OF HANOVER?

1. What types of businesses should Hanover accept into the community?
 - Manufacturing
 - Retail
 - None
2. Where should these business locate?
3. Should businesses be engrained into new residential development?
4. Attracting businesses takes Village resources

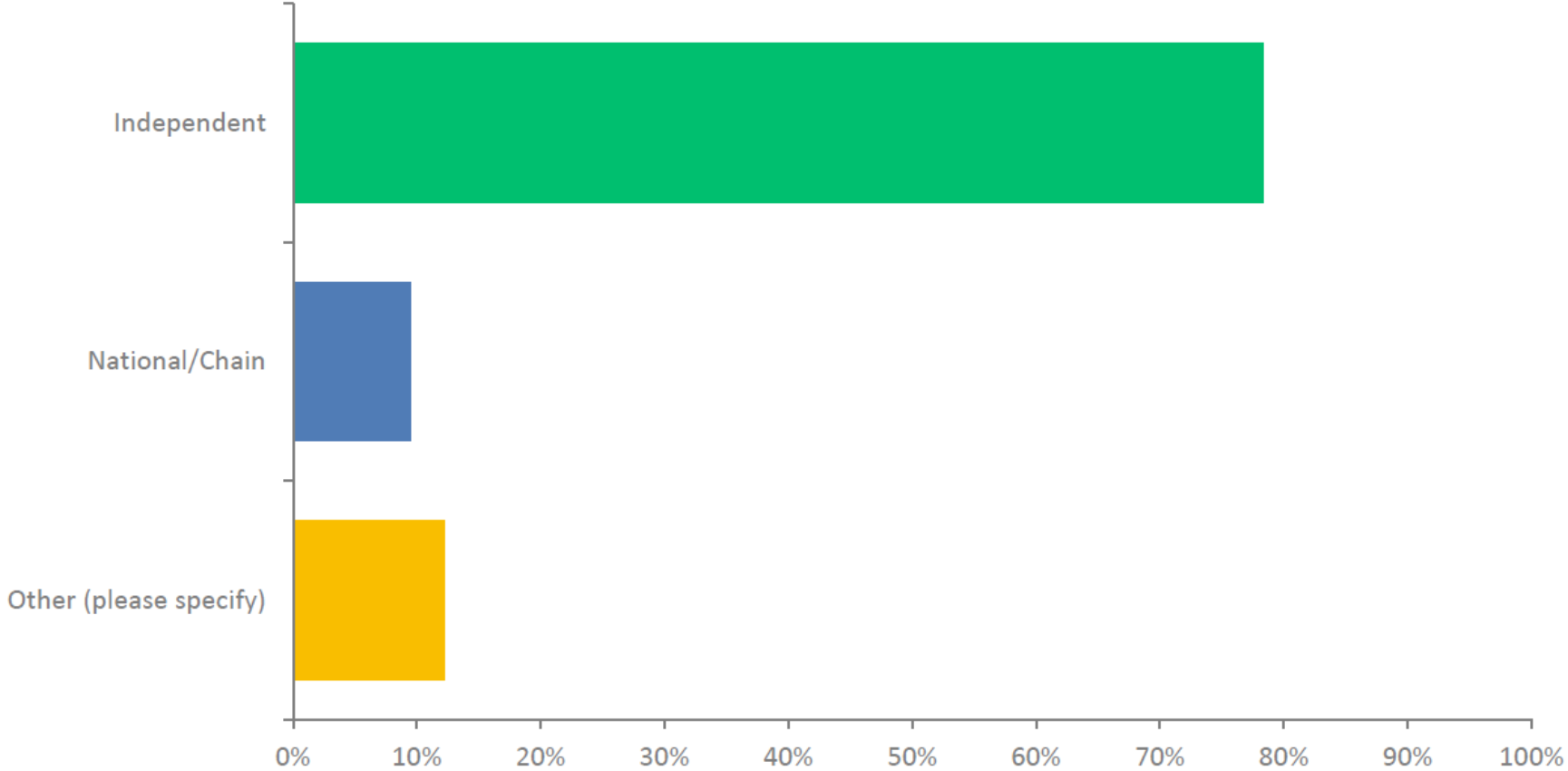
Q40: What type of commercial development would you like to see in the Village?

Answered: 187 Skipped: 58



Q41: If commercial development were to occur, which type of commercial development would you prefer in the Village?

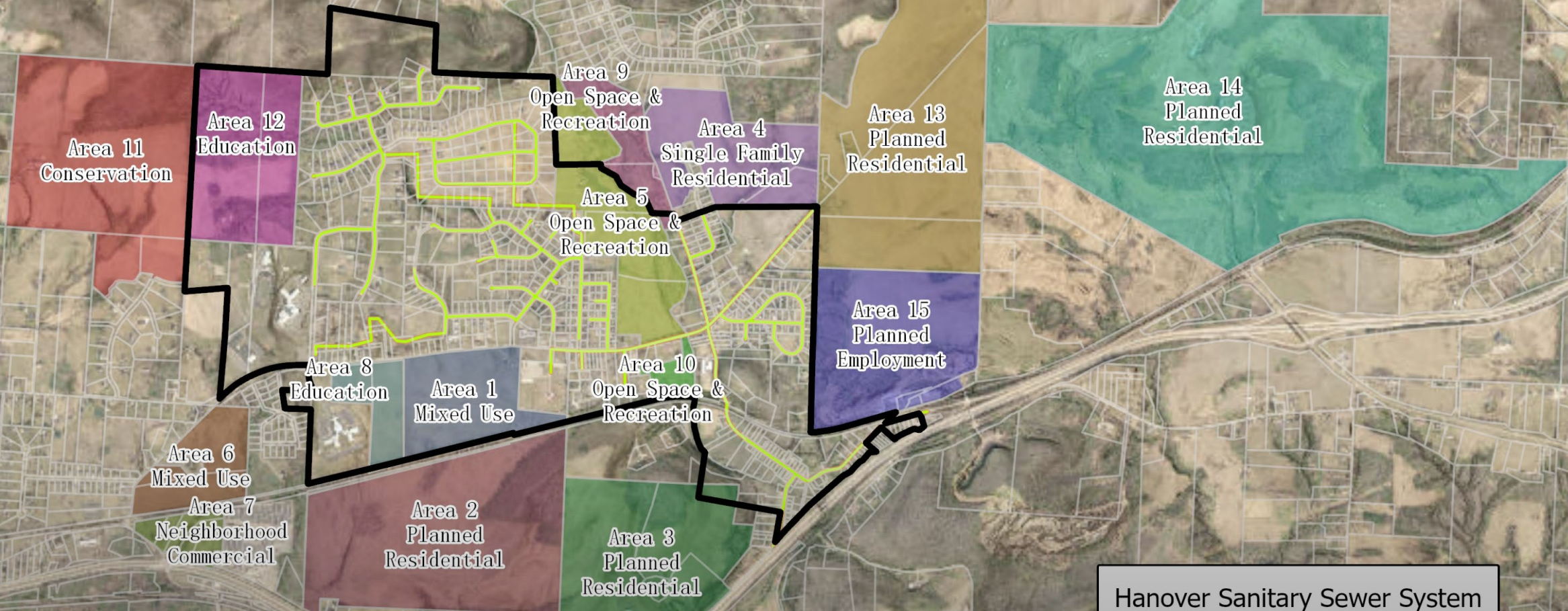
Answered: 180 Skipped: 65





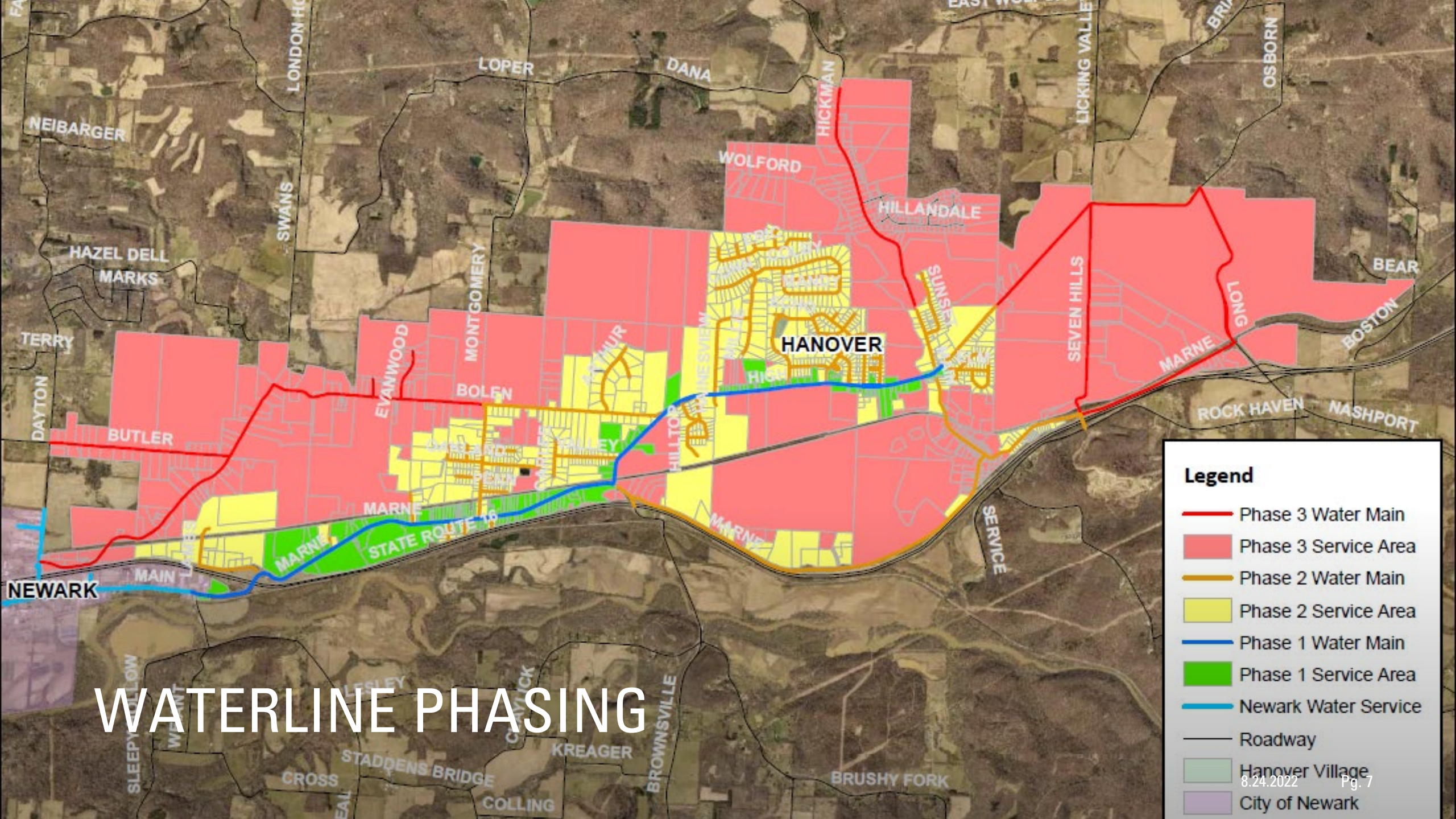
WEST HIGH STREET

DEVELOPMENT PRIORITY AREA



Hanover Sanitary Sewer System

Sanitary Sewer



WATERLINE PHASING

Legend

- Phase 3 Water Main
- Phase 3 Service Area
- Phase 2 Water Main
- Phase 2 Service Area
- Phase 1 Water Main
- Phase 1 Service Area
- Newark Water Service
- Roadway
- Hanover Village
- City of Newark



TRANSECT REVIEW

Regional Sector	
■	G1 - Restricted Growth
■	G2 - Controlled Growth
■	G3 - Intended Growth
■	G4 - Infill Growth
■	O1 - Preserved Open
■	O2 - Reserved Open
■	SU - Special Use

VILLAGE OF HANOVER COMPREHENSIVE PLAN THEMES

Aesthetically appealing
structures

Environmental
considerations
considered a priority

Transportation
connections between all
development

Protect road functionality

Pedestrian, bicycle and
other forms of non-
motorized transportation
must be included in new
development

New housing should be
diverse in style and
density

Commercial land use
should provide a tax base
to the Village and
services to the
community