

VILLAGE OF



HANOVER
COMPREHENSIVE
PLAN

AGENDA

1. Review of Past Comp Plan
 - a. Community Survey
2. Anticipated Village & Regional Trends
3. Transportation and Mobility
 - a. Roads
 - b. Sidewalks
 - c. Paths
 - d. Transit
 - e. Bridges

Review of Past Comp Plan



What was good? Bad?

Items we should carry forward?
Items we should leave behind?



Community Survey

Questions to replicate in 2022?

Anticipated Village & Regional Trends



Village



Licking County



Central Ohio

Transportation and Mobility

- Roads
- Bridges
- Intersections
- Sidewalks
- Multi-Use Paths
- Transit
- Mobility Hub

WHY MOBILITY HUBS?

- **Smarter sustainable transport planning for sustainable and equitable modes reducing the dominance of the private car and associated problems of congestion, carbon emissions, air quality and social exclusion. Creating a hierarchical network of such hubs, creates an attractive, integrated, viable alternative mobility lifestyle.**
- **Convenient multi-modal trips, with the possibility of seamless switches and improved links between different layers of transport such as the core public transport network and shared services.**
- **Choice of modes encourage people to think multi-modally and are a complement and enabler of full digital integration of services allowing people to reduce their car use and the associated impacts.**

WHY MOBILITY HUBS?

- **Plugging the gaps in the public transport network** In rural areas they can perform a sustainable ‘first or last mile’ connection to the nearest bus or railway services, in a cost effective way.
- **Improves safety and more comfortable** by offering a safer and more comfortable dwell time which will lead to improved access for more vulnerable users.
- **Improved accessibility** It is possible for mobility hubs to provide space for adapted and inclusive modes as part of overall transport solutions.

WHY MOBILITY HUBS?

- **Raises the profile of shared and sustainable travel modes with the associated benefits of reduction in car use.**
- **Improved public realm for the benefit of pedestrians, cyclists and business owners addressing parking problems and creating additional facilities makes for a better experience for the traveler, increasing patronage.**
- **Management of emerging services: In addition they help to solve the issue of managing “street clutter” from dockless / free floating micro-mobility services and provide a natural home for EV charging infrastructure.**

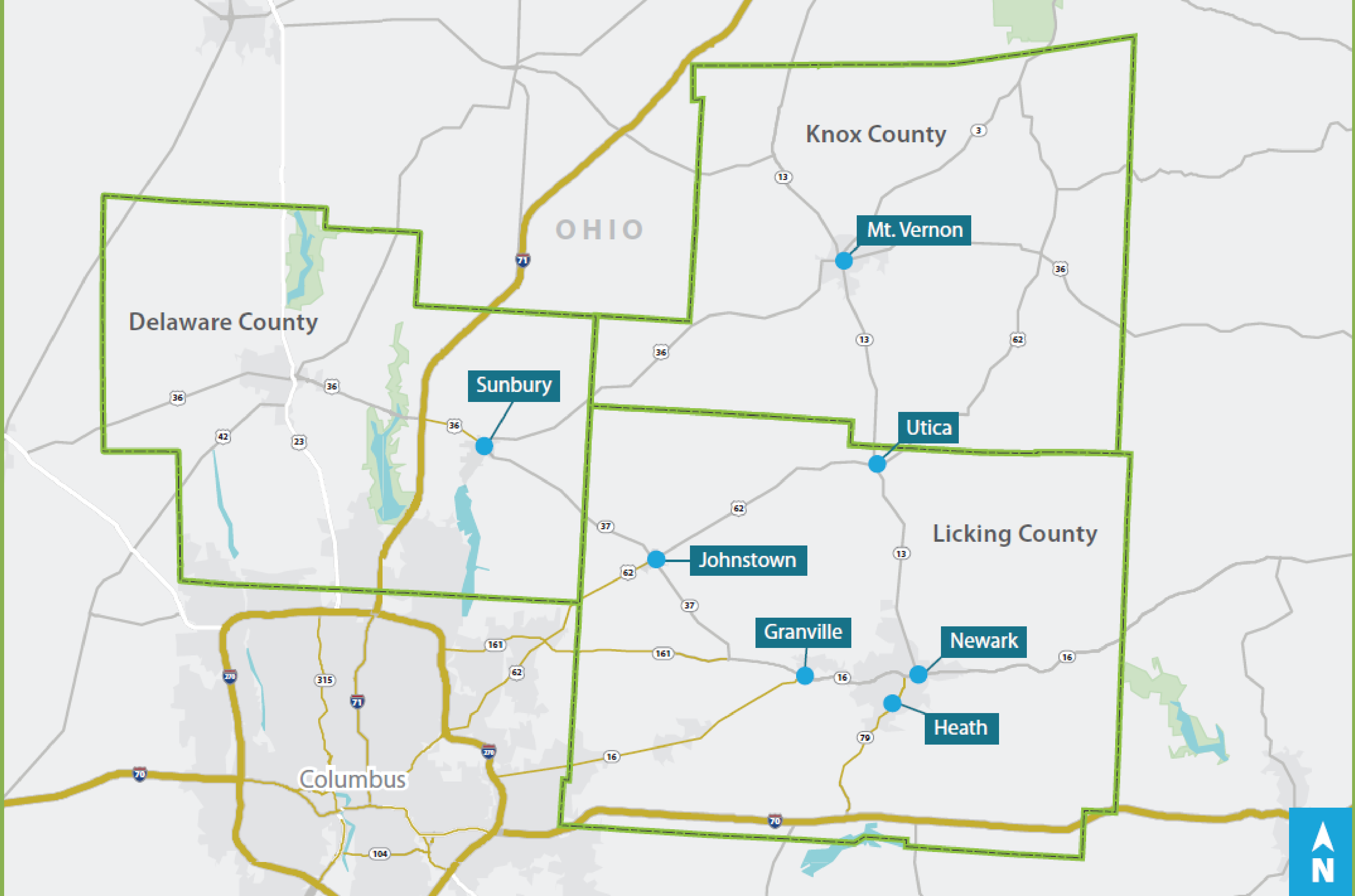
MOBILITY HUB



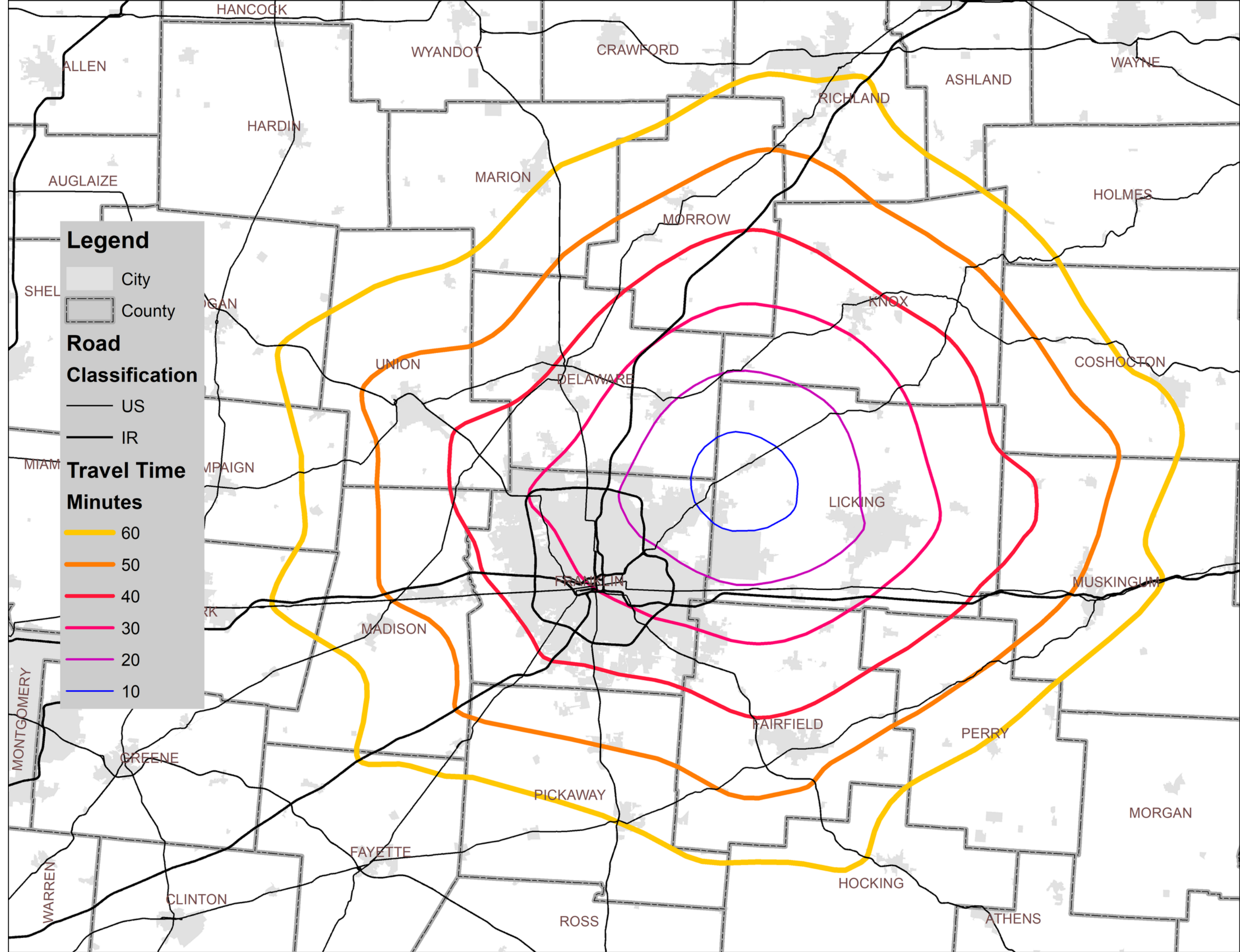
MOBILITY FACTORY INNOVATION CENTER

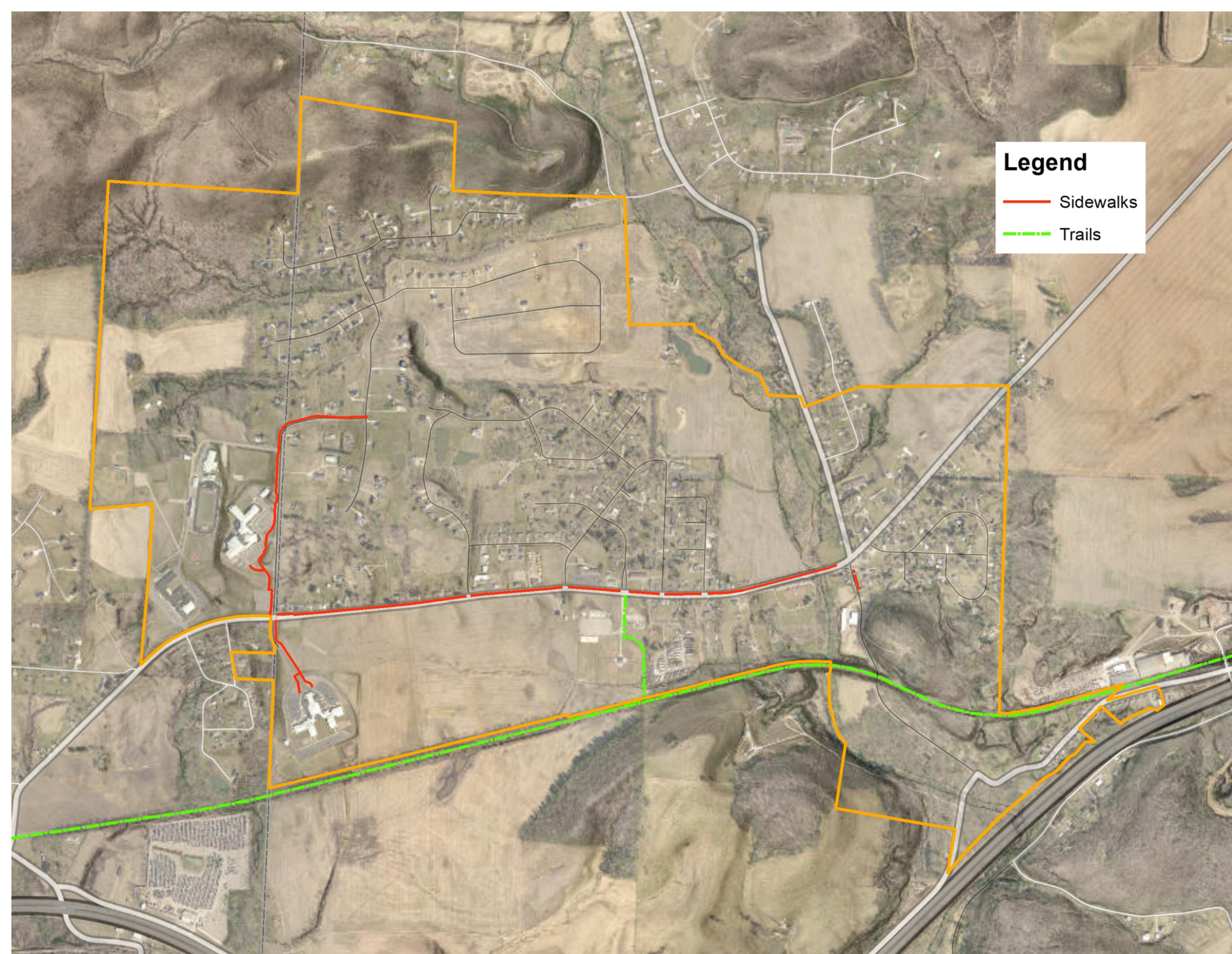


MOBILITY HUB NETWORK



Drive Time Map Intel Fab Facility





HANOVER WALKABILITY